



United States Department of the Interior  
BUREAU OF LAND MANAGEMENT

Washington, D.C. 20240  
<http://www.blm.gov>



SEP 1 2016

In Reply Refer To:  
1610 (200) P

Instruction Memorandum No. 2016-139  
Expires: 09/30/2019

To: All Assistant Directors, All Field Offices, State Directors, and National Operations Center Director

From: Deputy Director *Steven A. Ellis*

Subject: Policy for Resource Management Plan Effectiveness Monitoring for Renewable Resources with Additional Guidance for Plans Implementing the Greater Sage-Grouse Conservation Strategy

**Program Areas:** All Program Areas

**Purpose:** This Instruction Memorandum (IM) provides guidance on the use of terrestrial and aquatic objectives and quantitative data to determine Resource Management Plan (RMP) effectiveness. Additionally, for RMPs that include Greater Sage-Grouse (GRSG) habitat, this IM provides guidance for tracking and reporting on the implementation of decisions using the e-Planning tracking database.

**Policy/Action:**

RMP Effectiveness Monitoring of Renewable Resources on BLM Lands—Applies to All RMPs

Assessing RMP effectiveness is a component of the land use plan evaluation as described in the Land Use Planning Handbook (H-1601-1). The effectiveness of BLM RMPs will be determined by the status and trend of the terrestrial and aquatic resources relative to the objectives identified in the plans. Data to inform the effectiveness of the RMPs will be collected following the Assessment, Inventory and Monitoring (AIM) principles (BLM Technical Note 445) following a rotating panel design.<sup>1</sup> The data will be collected following the indicators and methods outlined in BLM Technical Note 440 for terrestrial resources and BLM Technical Reference 1735-1 for aquatic resources. At the end of the panel rotation, the appropriate state and field office leads, in conjunction with the National Operations Center (NOC), will prepare a report on the

---

<sup>1</sup> This is a design where an equal number of sample points are visited across the study area each year for a set number of years; e.g., 5-years. This allows for an adequate representation of the variability within the study area while also accounting for inter-annual variability due to climatic conditions. See Attachment A for an example.

effectiveness of the field office decisions in meeting the terrestrial and aquatic objectives based upon the status and trend of the specific indicator(s). If objectives are not met or if the area is not making progress toward meeting the objectives, the field office will conduct a causal factor analysis and whether or not the cause is the result of BLM decisions, the resulting report should discuss if and how the BLM can work to reduce or eliminate any of the causal factors.

As stated above, AIM indicators values will inform assessment of status and trend of terrestrial and aquatic objectives identified in the RMP. Supplemental indicators, methods, and sample intensification (Attachment 1) may be needed to determine achievement, or trend toward achievement, of local objectives (i.e., allotments, vegetation treatments, habitats for special status species, etc.) and the effectiveness of implementing management actions for a specific activity. Qualitative assessments such as Interpreting Indicators of Rangeland Health (TR 1734-6), Greater Sage-Grouse Habitat Assessment Framework (TR 6710-1), or Proper Functioning Condition (TR 1737-15), should be used to augment the status and trend information and should incorporate AIM indicators and methods to complete the assessments, when possible. In addition, other partner information that describes terrestrial and aquatic condition can be used to inform the assessment. Other assessment efforts are not a substitute for the standardized, quantitative data needed to report on the effectiveness of the RMP, however they may serve as an adequate surrogate until adequate data points following the AIM principles have been collected to detect resource changes that would result from management actions within the RMP area.

#### Additional Requirements for RMP Effectiveness Monitoring of the GRSG Plans

In addition to the RMP effectiveness monitoring described above, BLM field offices with Approved Resource Management Plan Amendments for the Rocky Mountain and Great Basin GRSG Regions and nine Approved Resource Management Plans in the Rocky Mountain GRSG Region (collectively referred to as the GRSG Plans), will use AIM data, methods, data capture, and data management to assess the status and trend of GRSG habitat within a region, state, or habitat management area as defined in the GRSG Plans. The AIM principles and practices are described in the GRSG Habitat Assessment Framework. Each of the approved GRSG Plans establishes GRSG seasonal habitat objectives that are adjusted based upon site potential and calculated from the AIM data. Additional indicators may be necessary to complete some of the seasonal habitat assessments and are described in the Habitat Assessment Framework.

The AIM data will also be used to inform the RMP effectiveness indicators described in the GRSG Monitoring Framework (Attachment 2), as appropriate. The GRSG Monitoring Framework, found in each of the approved GRSG Plans, contains the necessary guidance for monitoring, evaluating, and reporting commitments. Since many of the monitoring commitments in the GRSG Plans are new commitments for the BLM, the state offices (SOs), field offices (FOs), and the NOC are taking a systematic approach to develop monitoring plans that not only address the reporting requirements, but also simultaneously provide data to inform other management questions. Please contact your state monitoring coordinator and sage-grouse implementation lead to determine the appropriate data for interim reports until implementation of the monitoring plan is complete.

## GRSG Plan Authorization Tracking

This IM directs all affected BLM offices with GRSG Plans, starting on the date this IM is issued, to use ePlanning to track BLM implementation activities, in conformance with existing RMPs, including those associated with the GRSG Plans. The GRSG Monitoring Framework commits the BLM to track project-level and/or site-specific actions and authorizations within Priority Habitat Management Areas, General Habitat Management Areas, and other sage-grouse designated management areas within each planning area. BLM SOs will provide an authorization tracking report to the Washington Office (WO) on an annual basis for each FO affected by GRSG Plans within their state. SOs will also be responsible for submitting a summary report to the Washington Office every five years. Several BLM states currently use ePlanning to register National Environmental Policy Act (NEPA) projects. Offices unable to use ePlanning to track implementation prior to the date this IM is issued will track these items and subsequently enter them into ePlanning when it becomes available.

The ePlanning database will allow the BLM to consistently enter information regarding individual implementation-level NEPA projects, which can then be used to aggregate information for reporting purposes by a geographical unit, such as a planning area. For example, using the information from the database, a manager can ascertain how many transmission rights-of-way have been approved in GRSG Priority Habitat Management Areas in a specific planning area. When the BLM registers a NEPA project into ePlanning, the system directs that information related to the proposed action be used to populate the database. Instructions on using ePlanning can be found on the [ePlanning SharePoint Site](#).

**Timeframe:** This IM is effective immediately upon receipt.

**Budget Impact:** The BLM received funding in Fiscal Year (FY) 2016 to initiate these activities in the highest value habitats. The BLM anticipates these additional funds will also be received in FY 2017. BLM SOs, FOs, and the NOC will prioritize monitoring in the highest value habitats annually based on available funds.

### **Background:**

RMP effectiveness monitoring for renewable resources, including GRSG habitat, is required to assess the status and trend of RMP resource condition objectives. Many species and resources, including GRSG, are broadly distributed across the landscape and cross geopolitical boundaries. Monitoring that includes quantitative terrestrial and aquatic indicators can provide the basis to evaluate the status and trend of quantifiable RMP objectives, evaluate land health, and determine achievement of Land Health Standards. Thus, the coordination of monitoring and assessments, where overlap exists, will create efficiencies through the elimination of redundant data collection activities by collecting data once and using it for multiple applications.

The AIM Strategy (IB 2012-080) establishes the rationale and need to adopt terrestrial and aquatic indicators that can be used broadly to ascertain achievement of Land Health Standards, which conform to the Fundamentals of Land Health. The AIM Strategy also provides a nationally consistent monitoring approach that provides information at multiple scales about resource extent, condition, and trend. The data collected through AIM implementation provide

the opportunity to use quantitative data multiple times for many purposes and provide data that are essential for informed, defensible land management decisions. The AIM Strategy moves the BLM toward a new paradigm where data are digitally collected, stored in spatially enabled databases, managed in an enterprise architecture environment, and easily shared across the BLM offices, partner agencies and interested publics.

Tracking of project-level and/or site-specific actions and authorizations within Priority Habitat, General Habitat, and other sage-grouse designated management areas will provide managers with the information needed to determine if the decisions in the GRSG Plans are being implemented. Findings obtained through authorization tracking, together with effectiveness monitoring results, and other research and new information, provide the basis for adaptive management changes to the plan. The processes of monitoring and adaptive management share the goal of improving effectiveness and permitting a dynamic response to increased knowledge of a changing landscape.

**Manual/Handbook Sections Affected:** Land Use Planning Handbook H-1601-1; Rangeland Health Standards Handbook H-4180-1; Special Status Species Management Manual 6840.

**Coordination:** Preparation of this IM was coordinated with State Assessment, Inventory, and Monitoring Leads, State Sage-Grouse Monitoring Leads, Deputy State Directors, and the Executive Leadership Team.

**Contact:** If you have any questions regarding this IM or training for implementing the AIM strategy, please contact Gordon Toevs, Senior Advisor, Sage-Grouse Implementation, at 202-567-1589 or by email at [gtoevs@blm.gov](mailto:gtoevs@blm.gov).

#### Attachments

- 1- Implementation of Resource Management Plan Effectiveness Monitoring for Renewable Resources (4pp)
- 2- Greater Sage-Grouse Monitoring Framework (48pp)

## Attachment 1: Implementation of Resource Management Plan (RMP) Effectiveness Monitoring for Renewable Resources

### *Sample Design*

The attainment of renewable resource objectives within resource management plans (RMPs) will be assessed using statistically valid sample designs on a five-year rotating panel (Figure 1). Sample designs are intended to be comprehensive across all BLM lands and ascertain the cumulative effectiveness of plan objectives as described in RMPs. Effectiveness monitoring is the process of collecting data to determine whether desired outcomes (expressed as goals and objectives in the resource management plan) are met (or progress is being made toward meeting them) as the allowable uses and management actions are being implemented. All sample designs will be cooperative efforts between the National Operations Center (NOC), state offices, and the field office(s) implementing the sample design.

Where RMP objectives correspond with state or regional standards and guides, efficiencies can be gained through development of survey designs to simultaneously assess the attainment of both RMP objectives and land health standards. The Assessment Inventory Monitoring (AIM) terrestrial and aquatic indicators will be used, with supplemental indicators as necessary, to assess the attainment of land health standards. During the development of the monitoring plan, the NOC will provide guidance on cross-walking indicators to standards. To achieve these dual monitoring and assessment purposes, intensification in target areas of high value or conflict (i.e., National Conservation Lands, mitigation sites, allotments, project areas) or to monitor habitat areas for species of concern (i.e., Desert Tortoise, Prairie Chicken, Gunnison or Greater Sage-Grouse) may be required. The required number of sample points for each reporting unit will vary, depending on many factors such as the size and variability of the reporting area, the scope of the proposed management activity, and the desired level of confidence.

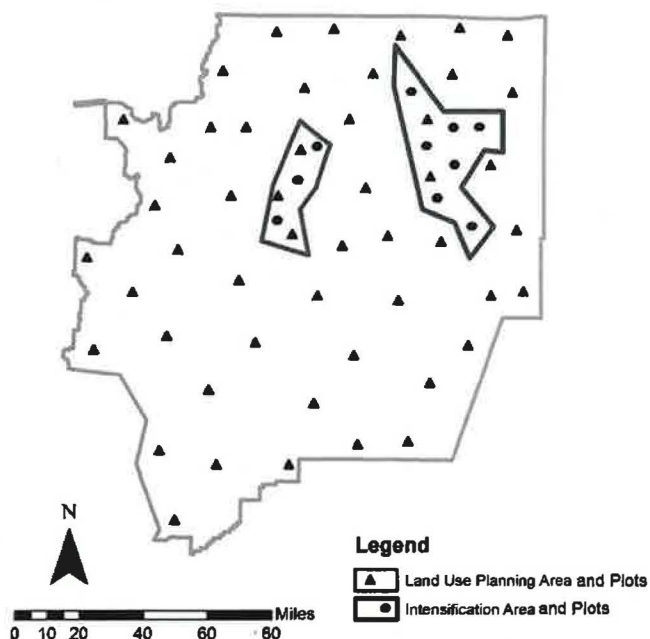


Figure 1. Example of the statistically based 5-year rotating sample design addressing RMP effectiveness. Sample points were selected randomly such that every location within the RMP area had a known chance of being sampled, enabling inferences across the entire landscape. Example inferences include the average bare soil cover in the RMP area or the percentage of the landscape with presence of non-native invasive species. A subset of these points will be sampled each year over 5 consecutive years to complete the sample design. When additional information is needed in a specific area within the planning unit, sampling can be intensified and additional indicators can be added.

### ***Data Collection***

BLM terrestrial (Technical Note 440) and aquatic indicators (Technical Reference 1785-1), will be collected using consistent methods and electronic data capture. Supplemental indicators will be identified during the development or periodic review of the monitoring plan. Other assessment protocols such as Habitat Assessment Framework (HAF), Interpreting Indicators of Rangeland Health, and Proper Functioning Condition (PFC) are effective assessment tools and should incorporate the quantitative indicators whenever possible. The use of dedicated seasonal field crews hired within the BLM or through agreements with partner organizations, especially those that engage youth, is highly recommended and has proven to be the most repeatable and least costly option for data collection efforts. Agreements should be administered by the BLM AIM State Monitoring Lead in cooperation with the field office monitoring coordinator and the NOC. These crews will receive training in data collection and stewardship protocols from the NOC or partnering office, including method calibration and quality control. District and/or field offices will serve as local experts to organize logistics, day-to-day operations, and safety of the field crews, as well as have the primary responsibility for ensuring the quality and completeness of the data and the in-season calibration requirements.

### ***Data Storage***

The data will be captured and managed electronically by the field crew, the field office, and the state office such that they can be uploaded and stored in the terrestrial and aquatic monitoring databases at the NOC. After quality control at the field and district level, data will be aggregated at the state level by the AIM State Monitoring Lead. The AIM State Monitoring Lead will then submit the data to the NOC for final quality control, central storage, and management.

### ***Analysis and Reporting***

Indicator values from the data will be made available annually by the NOC through the EGIS web portal and geospatial gateway. These indicator values, and the underlying sample design, will inform estimates of the status of renewable resources at the RMP scale as well as broader (e.g., ecoregional) and finer (e.g., intensification areas, treatment areas, habitat areas, watersheds) scales. Field offices and state offices will be responsible for reporting at the RMP scale and finer units. NOC will provide analytical tools, indicator estimates, and other support as needed. Regional and national monitoring results will be analyzed and reported by the NOC. Baseline data collected during the first five years of monitoring can be used to assess status. Trend estimates will be possible thereafter and can be reported along with the annual estimates. Additional BLM monitoring data such as those collected for the national BLM Landscape Monitoring Framework and the Western Rivers and Streams Assessment will be available to supplement the data collected through the field office sample design.

The Land Use Planning Handbook describes the analysis and reporting requirements for assessing the effectiveness of RMP objectives for renewable resources. Effectiveness monitoring is the process of collecting data to determine whether desired outcomes (expressed as goals and objectives in the land use plan) are met (or progress is being made toward meeting them) as the allowable uses and management actions are being implemented. A monitoring

strategy must be developed as part of the land use plan that identifies monitoring indicators, acceptable thresholds of departure from potential natural conditions, protocols, and timeframes that will be used to evaluate and determine whether or not desired outcomes are being achieved. RMP reporting will occur on a 5-year basis, as documented in the evaluation schedule. Plan evaluations should also be completed prior to any plan revisions and for major plan amendments. Where appropriate, state and field offices identify resource management plans that can be grouped/ batched in a geographic region or planning area to look at issues that cut across boundaries (broad and mid-scale reporting). Each plan should have its own evaluation documentation as well as a combined (grouped/batched) evaluation for all RMPs identified in the geographical region or planning area. The AIM terrestrial and aquatic data will provide the baseline and the trend data for renewable resource objectives and thresholds related to uplands, riparian-wetlands, water quality, and upland and in-stream habitats. Supplemental indicators should be added, as necessary, for resource objective and thresholds where the AIM data does not provide adequate information.

For those plans amended, revised, or replaced by the Greater Sage-Grouse Planning Effort, more specific management questions have been added to the LUP effectiveness evaluation. The additional effectiveness questions are: 1) is the plan effective in achieving (or making progress toward achieving) desired outcomes based on the sage-grouse habitat objectives; 2) is the plan effective in meeting, or making progress toward meeting, land health standards, including Special Status Species/wildlife habitat standard; 3) is the plan meeting the disturbance objective(s) within the RMP area, and 4) are the populations within this plan boundary increasing, stable, or declining?

### ***Training***

Monitoring protocol trainings required for this activity will include the terrestrial and aquatic core indicators (Technical Note 440 and Technical Reference 1785-1, respectively), as well as trainings to complete assessments such as HAF, Interpreting Indicators of Rangeland Health, and PFC. Additional training for BLM resource staff in the use and interpretation of data will be available via webinars. Trainings will be coordinated through the BLM NOC with the NTC and partnering offices or regional training facilities.

### ***Roles and Responsibilities***

Step	Activity	Responsible Entity
Planning/Funding	Secure/Manage Funding Maintain Agreements Coordinate multi-scale objectives	State Office (SO) (State AIM Monitoring Coordinator)
Study Design	Broad- and mid-scale statistical design Fine and site scale densifications Identify sample points	NOC, with substantial input from Field (FO) and State Office (SO) (Partner with USDA-Jornada & USU-NAMC)
Data Collection	Hire/oversee field crews Logistical support Ensure training of field crews Collect indicator data	District/Field Office with oversight in coordination from the State AIM Monitoring Coordinator

Quality Control	Field data-entry validation Completeness of data collection Data aggregation	FO/DO SO Final quality control by NOC
Data Storage	Upload field data to central database Make data available on BLM network	NOC
Analysis and Reporting	Evaluate land health standards RMP Effectiveness	Broad- and mid-scale reporting by the NOC; Resource management plan area, fine and site scale reporting by SO and FO (Partner with USDA-Jornada & USU-NAMC)

# THE GREATER SAGE-GROUSE MONITORING FRAMEWORK

Bureau of Land Management  
U.S. Forest Service

*Developed by  
the Interagency  
Greater  
Sage-Grouse  
Disturbance  
and Monitoring  
Subteam*

May 30, 2014

# The Greater Sage-Grouse Monitoring Framework

Developed by the Interagency Greater Sage-Grouse Disturbance and Monitoring Subteam

Introduction.....	3
I. Broad and Mid Scales.....	7
A. Implementation (Decision) Monitoring .....	7
B. Habitat Monitoring .....	8
B.1. Sagebrush Availability (Measure 1).....	10
a. Establishing the Sagebrush Base Layer .....	11
b. Monitoring Sagebrush Availability .....	19
B.2. Habitat Degradation Monitoring (Measure 2) .....	22
a. Habitat Degradation Datasets and Assumptions.....	22
b. Habitat Degradation Threat Combination and Calculation .....	26
B.3. Energy and Mining Density (Measure 3).....	26
a. Energy and Mining Density Datasets and Assumptions.....	28
b. Energy and Mining Density Threat Combination and Calculation .....	28
C. Population (Demographics) Monitoring .....	29
D. Effectiveness Monitoring .....	29
II. Fine and Site Scales.....	35
III. Conclusion.....	37
IV. The Greater Sage-Grouse Disturbance and Monitoring Subteam Membership .....	37
Figure 1. Map of Greater Sage-Grouse range, populations, subpopulations, and Priority Areas for Conservation as of 2013.....	5
Table 1. Indicators for monitoring implementation of the national planning strategy, RMP/LUP decisions, sage-grouse habitat, and sage-grouse populations at the broad and mid scales.....	6
Table 2. Relationship between the 18 threats and the three habitat disturbance measures for monitoring. ....	9
Table 3. Datasets for establishing and monitoring changes in sagebrush availability. ....	13
Table 4. Ecological Systems in BpS and EVT capable of supporting sagebrush vegetation and capable of providing suitable seasonal habitat for Greater Sage-Grouse.....	13
Table 5. Ecological Systems with conifers most likely to encroach into sagebrush vegetation. ..	18
Table 6. Geospatial data sources for habitat degradation (Measure 2). ....	27
Literature Cited .....	39
Attachment A: An Overview of Monitoring Commitments.....	43
Attachment B: User and Producer Accuracies for Aggregated Ecological Systems within LANDFIRE Map Zones.....	45
Attachment C: Sagebrush Species and Subspecies Included in the Selection Criteria for Building the EVT and BpS Layers .....	47



## INTRODUCTION

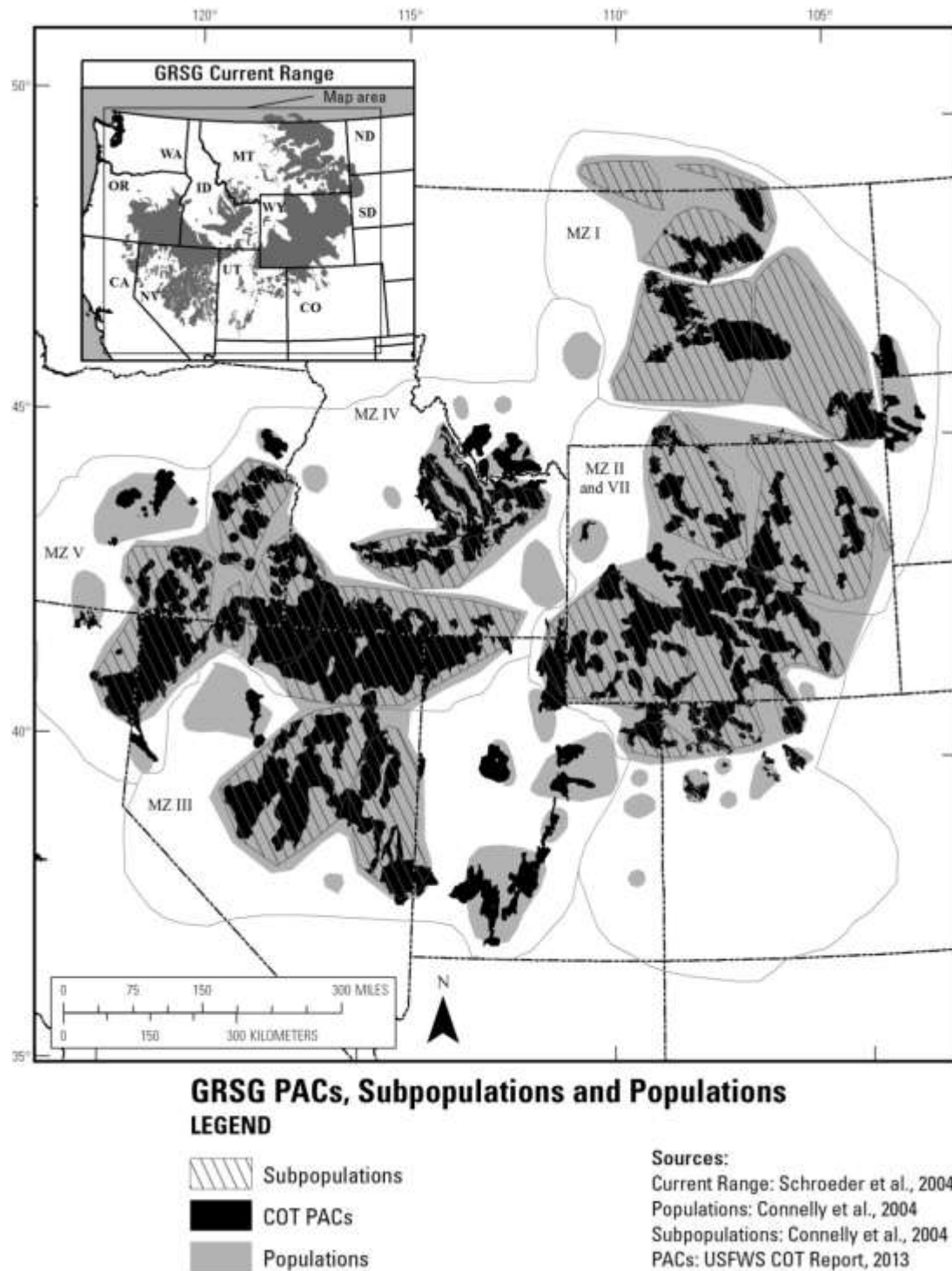
The purpose of this U.S. Bureau of Land Management (BLM) and U.S. Forest Service (USFS) Greater Sage-Grouse Monitoring Framework (hereafter, monitoring framework) is to describe the methods to monitor habitats and evaluate the implementation and effectiveness of the BLM's national planning strategy (attachment to BLM Instruction Memorandum 2012-044), the BLM resource management plans (RMPs), and the USFS's land management plans (LMPs) to conserve the species and its habitat. The regulations for the BLM (43 CFR 1610.4-9) and the USFS (36 CFR part 209, published July 1, 2010) require that land use plans establish intervals and standards, as appropriate, for monitoring and evaluations based on the sensitivity of the resource to the decisions involved. Therefore, the BLM and the USFS will use the methods described herein to collect monitoring data and to evaluate implementation and effectiveness of the Greater Sage-Grouse (GRSG) (hereafter, sage-grouse) planning strategy and the conservation measures contained in their respective land use plans (LUPs). A monitoring plan specific to the Environmental Impact Statement, land use plan, or field office will be developed after the Record of Decision is signed. For a summary of the frequency of reporting, see Attachment A, An Overview of Monitoring Commitments. Adaptive management will be informed by data collected at any and all scales.

To ensure that the BLM and the USFS are able to make consistent assessments about sage-grouse habitats across the range of the species, this framework lays out the methodology—at multiple scales—for monitoring of implementation and disturbance and for evaluating the effectiveness of BLM and USFS actions to conserve the species and its habitat. Monitoring efforts will include data for measurable quantitative indicators of sagebrush availability, anthropogenic disturbance levels, and sagebrush conditions. Implementation monitoring results will allow the BLM and the USFS to evaluate the extent that decisions from their LUPs to conserve sage-grouse and their habitat have been implemented. State fish and wildlife agencies will collect population monitoring information, which will be incorporated into effectiveness monitoring as it is made available.

This multiscale monitoring approach is necessary, as sage-grouse are a landscape species and conservation is scale-dependent to the extent that conservation actions are implemented within seasonal habitats to benefit populations. The four orders of habitat selection (Johnson 1980) used in this monitoring framework are described by Connelly et al. (2003) and were applied specifically to the scales of sage-grouse habitat selection by Stiver et al. (*in press*) as first order (broad scale), second order (mid scale), third order (fine scale), and fourth order (site scale). Habitat selection and habitat use by sage-grouse occur at multiple scales and are driven by multiple environmental and behavioral factors. Managing and monitoring sage-grouse habitats are complicated by the differences in habitat selection across the range and habitat use by individual birds within a given season. Therefore, the tendency to look at a single indicator of habitat suitability or only one scale limits managers' ability to identify the threats to sage-grouse

and to respond at the appropriate scale. For descriptions of these habitat suitability indicators for each scale, see “Sage-Grouse Habitat Assessment Framework: Multiscale Habitat Assessment Tool” (HAF; Stiver et al. *in press*).

Monitoring methods and indicators in this monitoring framework are derived from the current peer-reviewed science. Rangewide, best available datasets for broad- and mid-scale monitoring will be acquired. If these existing datasets are not readily available or are inadequate, but they are necessary to inform the indicators of sagebrush availability, anthropogenic disturbance levels, and sagebrush conditions, the BLM and the USFS will strive to develop datasets or obtain information to fill these data gaps. Datasets that are not readily available to inform the fine- and site-scale indicators will be developed. These data will be used to generate monitoring reports at the appropriate and applicable geographic scales, boundaries, and analysis units: across the range of sage-grouse as defined by Schroeder et al. (2004), and clipped by Western Association of Fish and Wildlife Agencies (WAFWA) Management Zone (MZ) (Stiver et al. 2006) boundaries and other areas as appropriate for size (e.g., populations based on Connelly et al. 2004). (See Figure 1, Map of Greater Sage-Grouse range, populations, subpopulations, and Priority Areas for Conservation as of 2013.) This broad- and mid-scale monitoring data and analysis will provide context for RMP/LMP areas; states; GRSG Priority Habitat, General Habitat, and other sage-grouse designated management areas; and Priority Areas for Conservation (PACs), as defined in “Greater Sage-grouse (*Centrocercus urophasianus*) Conservation Objectives: Final Report” (Conservation Objectives Team [COT] 2013). Hereafter, all of these areas will be referred to as “sage-grouse areas.”



**Figure 1.** Map of Greater Sage-Grouse range, populations, subpopulations, and Priority Areas for Conservation as of 2013.

This monitoring framework is divided into two sections. The broad- and mid-scale methods, described in Section I, provide a consistent approach across the range of the species to monitor implementation decisions and actions, mid-scale habitat attributes (e.g., sagebrush availability and habitat degradation), and population changes to determine the effectiveness of the planning strategy and management decisions. (See Table 1, Indicators for monitoring implementation of the national planning strategy, RMP/LMP decisions, sage-grouse habitat, and sage-grouse populations at the broad and mid scales.) For sage-grouse habitat at the fine and site scales, described in Section II, this monitoring framework describes a consistent approach (e.g., indicators and methods) for monitoring sage-grouse seasonal habitats. Funding, support, and dedicated personnel for broad- and mid-scale monitoring will be renewed annually through the normal budget process. For an overview of BLM and USFS multiscale monitoring commitments, see Attachment A.

**Table 1.** Indicators for monitoring implementation of the national planning strategy, RMP/LMP decisions, sage-grouse habitat, and sage-grouse populations at the broad and mid scales.

Implementation		Habitat		Population (State Wildlife Agencies)
<i>Geographic Scales</i>		Availability	Degradation	Demographics
Broad Scale: From the range of sage-grouse to WAFWA Management Zones	BLM/USFS National planning strategy goal and objectives	Distribution and amount of sagebrush within the range	Distribution and amount of energy, mining, and infrastructure facilities	WAFWA Management Zone population trend
Mid Scale: From WAFWA Management Zone to populations; PACs	RMP/LMP decisions	Mid-scale habitat indicators (HAF; Table 2 herein, e.g., percent of sagebrush per unit area)	Distribution and amount of energy, mining, and infrastructure facilities (Table 2 herein)	Individual population trend

## **I. BROAD AND MID SCALES**

First-order habitat selection, the broad scale, describes the physical or geographical range of a species. The first-order habitat of the sage-grouse is defined by populations of sage-grouse associated with sagebrush landscapes, based on Schroeder et al. 2004, and Connelly et al. 2004, and on population or habitat surveys since 2004. An intermediate scale between the broad and mid scales was delineated by WAFWA from floristic provinces within which similar environmental factors influence vegetation communities. This scale is referred to as the WAFWA Sage-Grouse Management Zones (MZs). Although no indicators are specific to this scale, these MZs are biologically meaningful as reporting units.

Second-order habitat selection, the mid-scale, includes sage-grouse populations and PACs. The second order includes at least 40 discrete populations and subpopulations (Connelly et al. 2004). Populations range in area from 150 to 60,000 mi<sup>2</sup> and are nested within MZs. PACs range from 20 to 20,400 mi<sup>2</sup> and are nested within population areas.

Other mid-scale landscape indicators, such as patch size and number, patch connectivity, linkage areas, and landscape matrix and edge effects (Stiver et al. *in press*) will also be assessed. The methods used to calculate these metrics will be derived from existing literature (Knick et al. 2011, Leu and Hanser 2011, Knick and Hanser 2011).

### **A. Implementation (Decision) Monitoring**

Implementation monitoring is the process of tracking and documenting the implementation (or the progress toward implementation) of RMP/LMP decisions. The BLM and the USFS will monitor implementation of project-level and/or site-specific actions and authorizations, with their associated conditions of approval/stipulations for sage-grouse, spatially (as appropriate) within Priority Habitat, General Habitat, and other sage-grouse designated management areas, at a minimum, for the planning area. These actions and authorizations, as well as progress toward completing and implementing activity-level plans, will be monitored consistently across all planning units and will be reported to BLM and USFS headquarters annually, with a summary report every 5 years, for the planning area. A national-level GRSG Land Use Plan Decision Monitoring and Reporting Tool is being developed to describe how the BLM and the USFS will consistently and systematically monitor and report implementation-level activity plans and implementation actions for all plans within the range of sage-grouse. A description of this tool for collection and reporting of tabular and spatially explicit data will be included in the Record of Decision or approved plan. The BLM and the USFS will provide data that can be integrated with other conservation efforts conducted by state and federal partners.

## **B. Habitat Monitoring**

The U.S. Fish and Wildlife Service (USFWS), in its 2010 listing decision for the sage-grouse, identified 18 threats contributing to the destruction, modification, or curtailment of sage-grouse habitat or range (75 FR 13910 2010). The BLM and the USFS will, therefore, monitor the relative extent of these threats that remove sagebrush, both spatially and temporally, on all lands within an analysis area, and will report on amount, pattern, and condition at the appropriate and applicable geographic scales and boundaries. These 18 threats have been aggregated into three broad- and mid-scale measures to account for whether the threat predominantly removes sagebrush or degrades habitat. (See Table 2, Relationship between the 18 threats and the three habitat disturbance measures for monitoring.) The three measures are:

Measure 1: Sagebrush Availability (percent of sagebrush per unit area)

Measure 2: Habitat Degradation (percent of human activity per unit area)

Measure 3: Energy and Mining Density (facilities and locations per unit area)

These three habitat disturbance measures will evaluate disturbance on all lands, regardless of land ownership. The direct area of influence will be assessed with the goal of accounting for actual removal of sagebrush on which sage-grouse depend (Connelly et al. 2000) and for habitat degradation as a surrogate for human activity. Measure 1 (sagebrush availability) examines where disturbances have removed plant communities that support sagebrush (or have broadly removed sagebrush from the landscape). Measure 1, therefore, monitors the change in sagebrush availability—or, specifically, where and how much of the sagebrush community is available within the range of sage-grouse. The sagebrush community is defined as the ecological systems that have the capability of supporting sagebrush vegetation and seasonal sage-grouse habitats within the range of sage-grouse (see Section I.B.1., Sagebrush Availability). Measure 2 (see Section I.B.2., Habitat Degradation Monitoring) and Measure 3 (see Section I.B.3., Energy and Mining Density) focus on where habitat degradation is occurring by using the footprint/area of direct disturbance and the number of facilities at the mid scale to identify the relative amount of degradation per geographic area of interest and in areas that have the capability of supporting sagebrush and seasonal sage-grouse use. Measure 2 (habitat degradation) not only quantifies footprint/area of direct disturbance but also establishes a surrogate for those threats most likely to have ongoing activity. Because energy development and mining activities are typically the most intensive activities in sagebrush habitat, Measure 3 (the density of active energy development, production, and mining sites) will help identify areas of particular concern for such factors as noise, dust, traffic, etc. that degrade sage-grouse habitat.

**Table 2.** Relationship between the 18 threats and the three habitat disturbance measures for monitoring.

Note: Data availability may preclude specific analysis of individual layers. See the detailed methodology for more information.

<b>USFWS Listing Decision Threat</b>	<b>Sagebrush Availability</b>	<b>Habitat Degradation</b>	<b>Energy and Mining Density</b>
Agriculture	X		
Urbanization	X		
Wildfire	X		
Conifer encroachment	X		
Treatments	X		
Invasive Species	X		
Energy (oil and gas wells and development facilities)		X	X
Energy (coal mines)		X	X
Energy (wind towers)		X	X
Energy (solar fields)		X	X
Energy (geothermal)		X	X
Mining (active locatable, leasable, and saleable developments)		X	X
Infrastructure (roads)		X	
Infrastructure (railroads)		X	
Infrastructure (power lines)		X	
Infrastructure (communication towers)		X	
Infrastructure (other vertical structures)		X	
Other developed rights-of-way		X	

The methods to monitor disturbance found herein differ slightly from methods used in Manier et al. 2013, which provided a baseline environmental report (BER) of datasets of disturbance across jurisdictions. One difference is that, for some threats, the BER data were for federal lands only. In addition, threats were assessed individually, using different assumptions from those in this monitoring framework about how to quantify the location and magnitude of threats. The methodology herein builds on the BER methodology and identifies datasets and procedures to use the best available data across the range of the sage-grouse and to formulate a consistent approach to quantify impact of the threats through time. This methodology also describes an approach to combine the threats and calculate each of the three habitat disturbance measures.

### **B.1. Sagebrush Availability (Measure 1)**

Sage-grouse populations have been found to be more resilient where a percentage of the landscape is maintained in sagebrush (Knick and Connelly 2011), which will be determined by sagebrush availability. Measure 1 has been divided into two submeasures to describe sagebrush availability on the landscape:

Measure 1a: the current amount of sagebrush on the geographic area of interest, and

Measure 1b: the amount of sagebrush on the geographic area of interest compared with the amount of sagebrush the landscape of interest could ecologically support.

Measure 1a (the current amount of sagebrush on the landscape) will be calculated using this formula: [the existing updated sagebrush layer] divided by [the geographic area of interest]. The appropriate geographic areas of interest for sagebrush availability include the species' range, WAFWA MZs, populations, and PACs. In some cases these sage-grouse areas will need to be aggregated to provide an estimate of sagebrush availability with an acceptable level of accuracy.

Measure 1b (the amount of sagebrush for context within the geographic area of interest) will be calculated using this formula: [existing sagebrush divided by [pre-EuroAmerican settlement geographic extent of lands that could have supported sagebrush]]. This measure will provide information to set the context for a given geographic area of interest during evaluations of monitoring data. The information could also be used to inform management options for restoration or mitigation and to inform effectiveness monitoring.

The sagebrush base layer for Measure 1 will be based on geospatial vegetation data adjusted for the threats listed in Table 2. The following subsections of this monitoring framework describe the methodology for determining both the current availability of sagebrush on the landscape and the context of the amount of sagebrush on the landscape at the broad and mid scales.

### **a. Establishing the Sagebrush Base Layer**

The current geographic extent of sagebrush vegetation within the rangewide distribution of sage-grouse populations will be ascertained using the most recent version of the Existing Vegetation Type (EVT) layer in LANDFIRE (2013). LANDFIRE EVT was selected to serve as the sagebrush base layer for five reasons: 1) it is the only nationally consistent vegetation layer that has been updated multiple times since 2001; 2) the ecological systems classification within LANDFIRE EVT includes multiple sagebrush type classes that, when aggregated, provide a more accurate (compared with individual classes) and seamless sagebrush base layer across jurisdictional boundaries; 3) LANDFIRE performed a rigorous accuracy assessment from which to derive the rangewide uncertainty of the sagebrush base layer; 4) LANDFIRE is consistently used in several recent analyses of sagebrush habitats (Knick et al. 2011, Leu and Hanser 2011, Knick and Hanser 2011); and 5) LANDFIRE EVT can be compared against the geographic extent of lands that are believed to have had the capability of supporting sagebrush vegetation pre-EuroAmerican settlement [LANDFIRE Biophysical Setting (BpS)]. This fifth reason provides a reference point for understanding how much sagebrush currently remains in a defined geographic area of interest compared with how much sagebrush existed historically (Measure 1b). Therefore, the BLM and the USFS have determined that LANDFIRE provides the best available data at broad and mid scales to serve as a sagebrush base layer for monitoring changes in the geographic extent of sagebrush. The BLM and the USFS, in addition to aggregating the sagebrush types into the sagebrush base layer, will aggregate the accuracy assessment reports from LANDFIRE to document the cumulative accuracy for the sagebrush base layer. The BLM—through its Assessment, Inventory, and Monitoring (AIM) program and, specifically, the BLM’s landscape monitoring framework (Taylor et al. 2014)—will provide field data to the LANDFIRE program to support continuous quality improvements of the LANDFIRE EVT layer. The sagebrush layer based on LANDFIRE EVT will allow for the mid-scale estimation of the existing percent of sagebrush across a variety of reporting units. This sagebrush base layer will be adjusted by changes in land cover and successful restoration for future calculations of sagebrush availability (Measures 1a and 1b).

This layer will also be used to determine the trend in other landscape indicators, such as patch size and number, patch connectivity, linkage areas, and landscape matrix and edge effects (Stiver et al. *in press*). In the future, changes in sagebrush availability, generated annually, will be included in the sagebrush base layer. The landscape metrics will be recalculated to examine changes in pattern and abundance of sagebrush at the various geographic boundaries. This information will be included in effectiveness monitoring (See Section I.D., Effectiveness Monitoring).

Within the USFS and the BLM, forest-wide and field office–wide existing vegetation classification mapping and inventories are available that provide a much finer level of data than what is provided through LANDFIRE. Where available, these finer-scale products will be useful for additional and complementary mid-scale indicators and local-scale analyses (see Section II,

Fine and Site Scales). The fact that these products are not available everywhere limits their utility for monitoring at the broad and mid scale, where consistency of data products is necessary across broader geographies.

### ***Data Sources for Establishing and Monitoring Sagebrush Availability***

There were three criteria for selecting the datasets for establishing and monitoring the change in sagebrush availability (Measure 1):

- Nationally consistent dataset available across the range
- Known level of confidence or accuracy in the dataset
- Continual maintenance of dataset and known update interval

Datasets meeting these criteria are listed in Table 3, Datasets for establishing and monitoring changes in sagebrush availability.

### ***LANDFIRE Existing Vegetation Type (EVT) Version 1.2***

LANDFIRE EVT represents existing vegetation types on the landscape derived from remote sensing data. Initial mapping was conducted using imagery collected in approximately 2001. Since the initial mapping there have been two update efforts: version 1.1 represents changes before 2008, and version 1.2 reflects changes on the landscape before 2010. Version 1.2 will be used as the starting point to develop the sagebrush base layer.

Sage-grouse subject matter experts determined which of the ecological systems from the LANDFIRE EVT to use in the sagebrush base layer by identifying the ecological systems that have the capability of supporting sagebrush vegetation and that could provide suitable seasonal habitat for the sage-grouse. (See Table 4, Ecological systems in BpS and EVT capable of supporting sagebrush vegetation and capable of providing suitable seasonal habitat for Greater Sage-Grouse.) Two additional vegetation types that are not ecological systems were added to the EVT: *Artemisia tridentata* ssp. *vaseyana* Shrubland Alliance and *Quercus gambelii* Shrubland Alliance. These alliances have species composition directly related to the Rocky Mountain Lower Montane-Foothill Shrubland ecological system and the Rocky Mountain Gambel Oak-Mixed Montane Shrubland ecological system, both of which are ecological systems in LANDFIRE BpS. In LANDFIRE EVT, however, in some map zones, the Rocky Mountain Lower Montane-Foothill Shrubland ecological system and the Rocky Mountain Gambel Oak-Mixed Montane Shrubland ecological system were named *Artemisia tridentata* ssp. *vaseyana* Shrubland Alliance and *Quercus gambelii* Shrubland Alliance, respectively.

**Table 3.** Datasets for establishing and monitoring changes in sagebrush availability.

Dataset	Source	Update Interval	Most Recent Version Year	Use
BioPhysical Setting v1.1	LANDFIRE	Static	2008	Denominator for sagebrush availability
Existing Vegetation Type v1.2	LANDFIRE	Static	2010	Numerator for sagebrush availability
Cropland Data Layer	National Agricultural Statistics Service	Annual	2012	Agricultural updates; removes existing sagebrush from numerator of sagebrush availability
National Land Cover Dataset Percent Imperviousness	Multi-Resolution Land Characteristics Consortium (MRLC)	5-Year	2011 (next available in 2016)	Urban area updates; removes existing sagebrush from numerator of sagebrush availability
Fire Perimeters	GeoMac	Annual	2013	< 1,000-acre fire updates; removes existing sagebrush from numerator of sagebrush availability
Burn Severity	Monitoring Trends in Burn Severity	Annual	2012 (2-year delay in data availability)	> 1,000-acre fire updates; removes existing sagebrush from numerator of sagebrush availability except for unburned sagebrush islands

**Table 4.** Ecological systems in BpS and EVT capable of supporting sagebrush vegetation and capable of providing suitable seasonal habitat for Greater Sage-Grouse.

Ecological System	Sagebrush Vegetation that the Ecological System has the Capability of Producing
Colorado Plateau Mixed Low Sagebrush Shrubland	<i>Artemisia arbuscula</i> ssp. <i>longiloba</i> <i>Artemisia bigelovii</i> <i>Artemisia nova</i> <i>Artemisia frigida</i> <i>Artemisia tridentata</i> ssp. <i>wyomingensis</i>
Columbia Plateau Low Sagebrush Steppe	<i>Artemisia arbuscula</i> <i>Artemisia arbuscula</i> ssp. <i>longiloba</i> <i>Artemisia nova</i>

Columbia Plateau Scabland Shrubland	<i>Artemisia rigida</i>
Columbia Plateau Steppe and Grassland	<i>Artemisia</i> spp.
Great Basin Xeric Mixed Sagebrush Shrubland	<i>Artemisia arbuscula</i> ssp. <i>longicaulis</i> <i>Artemisia arbuscula</i> ssp. <i>longiloba</i> <i>Artemisia nova</i> <i>Artemisia tridentata</i> ssp. <i>wyomingensis</i>
Inter-Mountain Basins Big Sagebrush Shrubland	<i>Artemisia tridentata</i> ssp. <i>tridentata</i> <i>Artemisia tridentata</i> ssp. <i>xericensis</i> <i>Artemisia tridentata</i> ssp. <i>vaseyana</i> <i>Artemisia tridentata</i> ssp. <i>wyomingensis</i>
Inter-Mountain Basins Big Sagebrush Steppe	<i>Artemisia cana</i> ssp. <i>cana</i> <i>Artemisia tridentata</i> ssp. <i>tridentata</i> <i>Artemisia tridentata</i> ssp. <i>xericensis</i> <i>Artemisia tridentata</i> ssp. <i>wyomingensis</i> <i>Artemisia tripartita</i> ssp. <i>tripartita</i> <i>Artemisia frigida</i>
Inter-Mountain Basins Curl-Leaf Mountain Mahogany Woodland and Shrubland	<i>Artemisia tridentata</i> ssp. <i>vaseyana</i> <i>Artemisia arbuscula</i> <i>Artemisia tridentata</i>
Inter-Mountain Basins Mixed Salt Desert Scrub	<i>Artemisia tridentata</i> ssp. <i>wyomingensis</i> <i>Artemisia spinescens</i>
Inter-Mountain Basins Montane Sagebrush Steppe	<i>Artemisia tridentata</i> ssp. <i>vaseyana</i> <i>Artemisia tridentata</i> ssp. <i>wyomingensis</i> <i>Artemisia nova</i> <i>Artemisia arbuscula</i> <i>Artemisia tridentata</i> ssp. <i>spiciformis</i>
Inter-Mountain Basins Semi-Desert Shrub-Steppe	<i>Artemisia tridentata</i> <i>Artemisia bigelovii</i> <i>Artemisia tridentata</i> ssp. <i>wyomingensis</i>
Northwestern Great Plains Mixed Grass Prairie	<i>Artemisia cana</i> ssp. <i>cana</i> <i>Artemisia tridentata</i> ssp. <i>vaseyana</i> <i>Artemisia frigida</i>
Northwestern Great Plains Shrubland	<i>Artemisia cana</i> ssp. <i>cana</i> <i>Artemisia tridentata</i> ssp. <i>tridentata</i> <i>Artemisia tridentata</i> ssp. <i>wyomingensis</i>
Rocky Mountain Gambel Oak-Mixed Montane Shrubland	<i>Artemisia tridentata</i>
Rocky Mountain Lower Montane-Foothill Shrubland	<i>Artemisia nova</i> <i>Artemisia tridentata</i> <i>Artemisia frigida</i>
Western Great Plains Floodplain Systems	<i>Artemisia cana</i> ssp. <i>cana</i>
Western Great Plains Sand Prairie	<i>Artemisia cana</i> ssp. <i>cana</i>
Wyoming Basins Dwarf Sagebrush Shrubland and Steppe	<i>Artemisia arbuscula</i> ssp. <i>longiloba</i> <i>Artemisia nova</i> <i>Artemisia tridentata</i> ssp. <i>wyomingensis</i> <i>Artemisia tripartita</i> ssp. <i>rupicola</i>
<i>Artemisia tridentata</i> ssp. <i>vaseyana</i> Shrubland Alliance (EVT only)	<i>Artemisia tridentata</i> ssp. <i>vaseyana</i>
<i>Quercus gambelii</i> Shrubland Alliance (EVT only)	<i>Artemisia tridentata</i>

### ***Accuracy and Appropriate Use of LANDFIRE Datasets***

Because of concerns over the thematic accuracy of individual classes mapped by LANDFIRE, all ecological systems listed in Table 4 will be merged into one value that represents the sagebrush base layer. With all ecological systems aggregated, the combined accuracy of the sagebrush base layer (EVT) will be much greater than if all categories were treated separately.

LANDFIRE performed the original accuracy assessment of its EVT product on a map zone basis. There are 20 LANDFIRE map zones that cover the historical range of sage-grouse as defined by Schroeder (2004). (See Attachment B, User and Producer Accuracies for Aggregated Ecological Systems within LANDFIRE Map Zones.) The aggregated sagebrush base layer for monitoring had user accuracies ranging from 57.1% to 85.7% and producer accuracies ranging from 56.7% to 100%.

*LANDFIRE EVT data are not designed to be used at a local level.* In reports of the percent sagebrush statistic for the various reporting units (Measure 1a), the uncertainty of the percent sagebrush will increase as the size of the reporting unit gets smaller. LANDFIRE data should never be used at the 30m pixel level (900m<sup>2</sup> resolution of raster data) for any reporting. The smallest geographic extent for using the data to determine percent sagebrush is at the PAC level; for the smallest PACs, the initial percent sagebrush estimate will have greater uncertainties compared with the much larger PACs.

### ***Agricultural Adjustments for the Sagebrush Base Layer***

The dataset for the geographic extent of agricultural lands will come from the National Agricultural Statistics Service (NASS) Cropland Data Layer (CDL) (<http://www.nass.usda.gov/research/Cropland/Release/index.htm>). CDL data are generated annually, with estimated producer accuracies for “large area row crops ranging from the mid 80% to mid-90%,” depending on the state ([http://www.nass.usda.gov/research/Cropland/sarsfaqs2.htm#Section3\\_18.0](http://www.nass.usda.gov/research/Cropland/sarsfaqs2.htm#Section3_18.0)). Specific information on accuracy may be found on the NASS metadata website (<http://www.nass.usda.gov/research/Cropland/metadata/meta.htm>). CDL provided the only dataset that matches the three criteria (nationally consistent, known level of accuracy, and periodically updated) for use in this monitoring framework and represents the best available agricultural lands mapping product.

The CDL data contain both agricultural classes and nonagricultural classes. For this effort, and in the baseline environmental report (Manier et al. 2013), nonagricultural classes were removed from the original dataset. The excluded classes are:

Barren (65 & 131), Deciduous Forest (141), Developed/High Intensity (124), Developed/Low Intensity (122), Developed/Med Intensity (123), Developed/Open Space (121), Evergreen Forest (142), Grassland Herbaceous (171), Herbaceous Wetlands (195), Mixed Forest (143), Open

Water (83 & 111), Other Hay/Non Alfalfa (37), Pasture/Hay (181), Pasture/Grass (62), Perennial Ice/Snow (112), Shrubland (64 & 152), Woody Wetlands (190).

The rule set for adjusting the sagebrush base layer for agricultural lands (and for updating the base layer for agricultural lands in the future) is that once an area is classified as agriculture in any year of the CDL, those pixels will remain out of the sagebrush base layer even if a new version of the CDL classifies that pixel as one of the nonagricultural classes listed above. The assumption is that even though individual pixels may be classified as a nonagricultural class in any given year, the pixel has not necessarily been restored to a natural sagebrush community that would be included in Table 4. A further assumption is that once an area has moved into agricultural use, it is unlikely that the area would be restored to sagebrush. Should that occur, however, the method and criteria for adding pixels back into the sagebrush base layer would follow those found in the sagebrush restoration monitoring section of this monitoring framework (see Section I.B.1.b., Monitoring Sagebrush Availability).

### ***Urban Adjustments for the Sagebrush Base Layer***

The National Land Cover Database (NLCD) (Fry et al. 2011) includes a percent imperviousness dataset that was selected as the best available dataset to be used for urban adjustments and monitoring. These data are generated on a 5-year cycle and are specifically designed to support monitoring efforts. Other datasets were evaluated and lacked the spatial specificity that was captured in the NLCD product. Any new impervious pixel in NLCD will be removed from the sagebrush base layer through the monitoring process. Although the impervious surface layer includes a number of impervious pixels outside of urban areas, this is acceptable for the adjustment and monitoring for two reasons. First, an evaluation of national urban area datasets did not reveal a layer that could be confidently used in conjunction with the NLCD product to screen impervious pixels outside of urban zones. This is because unincorporated urban areas were not being included, thus leaving large chunks of urban pixels unaccounted for in this rule set. Second, experimentation with setting a threshold on the percent imperviousness layer that would isolate rural features proved to be unsuccessful. No combination of values could be identified that would result in the consistent ability to limit impervious pixels outside urban areas. Therefore, to ensure consistency in the monitoring estimates, all impervious pixels will be used.

### ***Fire Adjustments for the Sagebrush Base Layer***

Two datasets were selected for performing fire adjustments and updates: GeoMac fire perimeters and Monitoring Trends in Burn Severity (MTBS). An existing data standard in the BLM requires that all fires of more than 10 acres are to be reported to GeoMac; therefore, there will be many small fires of less than 10 acres that will not be accounted for in the adjustment and monitoring attributable to fire. Using fire perimeters from GeoMac, all sagebrush pixels falling

within the perimeter of fires less than 1,000 acres will be used to adjust and monitor the sagebrush base layer.

For fires greater than 1,000 acres, MTBS was selected as a means to account for unburned sagebrush islands during the update process of the sagebrush base layer. The MTBS program (<http://www.mtbs.gov>) is an ongoing, multiyear project to map fire severity and fire perimeters consistently across the United States. One of the burn severity classes within MTBS is an unburned to low-severity class. This burn severity class will be used to represent unburned islands of sagebrush within the fire perimeter for the sagebrush base layer. Areas within the other severity classes within the fire perimeter will be removed from the base sagebrush layer during the update process. Not all wildfires, however, have the same impacts on the recovery of sagebrush habitat, depending largely on soil moisture and temperature regimes. For example, cooler, moister sagebrush habitat has a higher potential for recovery or, if needed, restoration than does the warmer, dryer sagebrush habitat. These cooler, moister areas will likely be detected as sagebrush in future updates to LANDFIRE.

### ***Conifer Encroachment Adjustment for the Sagebrush Base Layer***

Conifer encroachment into sagebrush vegetation reduces the spatial extent of sage-grouse habitat (Davies et al. 2011, Baruch-Mordo et al. 2013). Conifer species that show propensity for encroaching into sagebrush vegetation resulting in sage-grouse habitat loss include various juniper species, such as Utah juniper (*Juniperus osteosperma*), western juniper (*Juniperus occidentalis*), Rocky Mountain juniper (*Juniperus scopulorum*), pinyon species, including singleleaf pinyon (*Pinus monophylla*) and pinyon pine (*Pinus edulis*), ponderosa pine (*Pinus ponderosa*), lodgepole pine (*Pinus contorta*), and Douglas fir (*Pseudotsuga menziesii*) (Gruell et al. 1986, Grove et al. 2005, Davies et al. 2011).

A rule set for conifer encroachment was developed to adjust the sagebrush base layer. To capture the geographic extent of sagebrush that is likely to experience conifer encroachment, ecological systems within LANDFIRE EVT version 1.2 (NatureServe 2011) were identified if they had the capability of supporting both the conifer species (listed above) and sagebrush vegetation. Those ecological systems were deemed to be the plant communities with conifers most likely to encroach into sagebrush vegetation. (See Table 5, Ecological systems with conifers most likely to encroach into sagebrush vegetation.) Sagebrush vegetation was defined as including sagebrush species or subspecies that provide habitat for the Greater Sage-Grouse and that are included in the HAF. (See Attachment C, Sagebrush Species and Subspecies Included in the Selection Criteria for Building the EVT and BpS Layers.) An adjacency analysis was conducted to identify all sagebrush pixels that were directly adjacent to these conifer ecological systems, and these pixels were removed from the sagebrush base layer.

**Table 5.** Ecological systems with conifers most likely to encroach into sagebrush vegetation.

EVT Ecological Systems	Coniferous Species and Sagebrush Vegetation that the Ecological System has the Capability of Producing
Colorado Plateau Pinyon-Juniper Woodland	<i>Pinus edulis</i> <i>Juniperus osteosperma</i> <i>Artemisia tridentata</i> <i>Artemisia arbuscula</i> <i>Artemisia nova</i> <i>Artemisia tridentata</i> ssp. <i>tridentata</i> <i>Artemisia tridentata</i> ssp. <i>wyomingensis</i> <i>Artemisia tridentata</i> ssp. <i>vaseyana</i> <i>Artemisia bigelovii</i> <i>Artemisia pygmaea</i>
Columbia Plateau Western Juniper Woodland and Savanna	<i>Juniperus occidentalis</i> <i>Pinus ponderosa</i> <i>Artemisia tridentata</i> <i>Artemisia arbuscula</i> <i>Artemisia rigida</i> <i>Artemisia tridentata</i> ssp. <i>vaseyana</i>
East Cascades Oak-Ponderosa Pine Forest and Woodland	<i>Pinus ponderosa</i> <i>Pseudotsuga menziesii</i> <i>Artemisia tridentata</i> <i>Artemisia nova</i>
Great Basin Pinyon-Juniper Woodland	<i>Pinus monophylla</i> <i>Juniperus osteosperma</i> <i>Artemisia arbuscula</i> <i>Artemisia nova</i> <i>Artemisia tridentata</i> <i>Artemisia tridentata</i> ssp. <i>vaseyana</i>
Northern Rocky Mountain Ponderosa Pine Woodland and Savanna	<i>Pinus ponderosa</i> <i>Artemisia tridentata</i> <i>Artemisia arbuscula</i> <i>Artemisia tridentata</i> ssp. <i>vaseyana</i>
Rocky Mountain Foothill Limber Pine-Juniper Woodland	<i>Juniperus osteosperma</i> <i>Juniperus scopulorum</i> <i>Artemisia nova</i> <i>Artemisia tridentata</i>
Rocky Mountain Poor-Site Lodgepole Pine Forest	<i>Pinus contorta</i> <i>Pseudotsuga menziesii</i> <i>Pinus ponderosa</i> <i>Artemisia tridentata</i>
Southern Rocky Mountain Pinyon-Juniper Woodland	<i>Pinus edulis</i> <i>Juniperus monosperma</i> <i>Artemisia bigelovii</i> <i>Artemisia tridentata</i> <i>Artemisia tridentata</i> ssp. <i>wyomingensis</i> <i>Artemisia tridentata</i> ssp. <i>vaseyana</i>
Southern Rocky Mountain Ponderosa Pine Woodland	<i>Pinus ponderosa</i> <i>Pseudotsuga menziesii</i>

	<i>Pinus edulis</i> <i>Pinus contorta</i> <i>Juniperus</i> spp. <i>Artemisia nova</i> <i>Artemisia tridentata</i> <i>Artemisia arbuscula</i> <i>Artemisia tridentata</i> ssp. <i>vaseyana</i>
--	---

### ***Invasive Annual Grasses Adjustments for the Sagebrush Base Layer***

There are no invasive species datasets from 2010 to the present (beyond the LANDFIRE data) that meet the three criteria (nationally consistent, known level of accuracy, and periodically updated) for use in the determination of the sagebrush base layer. For a description of how invasive species land cover will be incorporated in the sagebrush base layer in the future, see Section I.B.1.b., Monitoring Sagebrush Availability.

### ***Sagebrush Restoration Adjustments for the Sagebrush Base Layer***

There are no datasets from 2010 to the present that could provide additions to the sagebrush base layer from restoration treatments that meet the three criteria (nationally consistent, known level of accuracy, and periodically updated); therefore, no adjustments were made to the sagebrush base layer calculated from the LANDFIRE EVT (version 1.2) attributable to restoration activities since 2010. Successful restoration treatments before 2010 are assumed to have been captured in the LANDFIRE refresh.

## **b. Monitoring Sagebrush Availability**

### ***Monitoring Sagebrush Availability***

Sagebrush availability will be updated annually by incorporating changes to the sagebrush base layer attributable to agriculture, urbanization, and wildfire. The monitoring schedule for the existing sagebrush base layer updates is as follows:

***2010 Existing Sagebrush Base Layer*** = [Sagebrush EVT] minus [2006 Imperviousness Layer] minus [2009 and 2010 CDL] minus [2009/10 GeoMac Fires that are less than 1,000 acres] minus [2009/10 MTBS Fires that are greater than 1,000 acres, excluding unburned sagebrush islands within the perimeter] minus [Conifer Encroachment Layer]

***2012 Existing Sagebrush Update*** = [2010 Existing Sagebrush Base Layer] minus [2011 Imperviousness Layer] minus [2011 and 2012 CDL] minus [2011/12 GeoMac Fires < 1,000 acres] minus [2011/12 MTBS Fires that are greater than 1,000 acres, excluding unburned sagebrush islands within the perimeter]

***Monitoring Existing Sagebrush post 2012*** = [Previous Existing Sagebrush Update Layer] minus [Imperviousness Layer (if new data are available)] minus [Next 2 years of CDL] minus [Next 2 years of GeoMac Fires < 1,000 acres] minus [Next 2 years of MTBS Fires that are greater than

1,000 acres, excluding unburned sagebrush islands within the perimeter] plus  
[restoration/monitoring data provided by the field]

### ***Monitoring Sagebrush Restoration***

Restoration after fire, after agricultural conversion, after seedings of introduced grasses, or after treatments of pinyon pine and/or juniper are examples of updates to the sagebrush base layer that can add sagebrush vegetation back into sagebrush availability in the landscape. When restoration has been determined to be successful through rangewide, consistent, interagency fine- and site-scale monitoring, the polygonal data will be used to add sagebrush pixels back into the broad- and mid-scale sagebrush base layer.

### ***Measure 1b: Context for Monitoring the Amount of Sagebrush in a Geographic Area of Interest***

Measure 1b describes the amount of sagebrush on the landscape of interest compared with the amount of sagebrush the landscape of interest could ecologically support. Areas with the potential to support sagebrush were derived from the BpS data layer that describes sagebrush pre-EuroAmerican settlement (v1.2 of LANDFIRE).

The identification and spatial locations of natural plant communities (vegetation) that are believed to have existed on the landscape (BpS) were constructed based on an approximation of the historical (pre-EuroAmerican settlement) disturbance regime and how the historical disturbance regime operated on the current biophysical environment. BpS is composed of map units that are based on NatureServe (2011) terrestrial ecological systems classification.

The ecological systems within BpS used for this monitoring framework are those ecological systems that are capable of supporting sagebrush vegetation and of providing seasonal habitat for sage-grouse (Table 4). Ecological systems selected included sagebrush species or subspecies that are included in the HAF and listed in Attachment C.

The BpS layer does not have an associated accuracy assessment, given the lack of any reference data. Visual inspection of the BpS data, however, reveals inconsistencies in the labeling of pixels among LANDFIRE map zones. The reason for these inconsistencies is that the rule sets used to map a given ecological system will vary among map zones based on different physical, biological, disturbance, and atmospheric regimes of the region. These variances can result in artificial edges in the map. Metrics will be calculated, however, at broad spatial scales using BpS potential vegetation type, not small groupings or individual pixels. Therefore, the magnitude of these observable errors in the BpS layer will be minor compared with the size of the reporting units. Since BpS will be used to identify broad landscape patterns of dominant vegetation, these inconsistencies will have only a minor impact on the percent sagebrush availability calculation. *As with the LANDFIRE EVT, LANDFIRE BpS data are not designed to be used at a local level. LANDFIRE data should never be used at the 30m pixel level for reporting.*

In conclusion, sagebrush availability data will be used to inform effectiveness monitoring and initiate adaptive management actions as necessary. The 2010 estimate of sagebrush availability will serve as the base year, and an updated estimate for 2012 will be reported in 2014 after all datasets become available. The 2012 estimate will capture changes attributable to wildfire, agriculture, and urban development. Subsequent updates will always include new fire and agricultural data and new urban data when available. Restoration data that meet the criteria for adding sagebrush areas back into the sagebrush base layer will be factored in as data allow. Given data availability, there will be a 2-year lag (approximately) between when the estimate is generated and when the data used for the estimate become available (e.g., the 2014 sagebrush availability will be included in the 2016 estimate).

### ***Future Plans***

Geospatial data used to generate the sagebrush base layer will be available through the BLM's EGIS web portal and geospatial gateway or through the authoritative data source. Legacy datasets will be preserved so that trends may be calculated. Additionally, accuracy assessment data for all source datasets will be provided on the portal either spatially, where applicable, or through the metadata. Accuracy assessment information was deemed vital to help users understand the limitation of the sagebrush estimates; it will be summarized spatially by map zone and will be included in the portal.

LANDFIRE plans to begin a remapping effort in 2015. This remapping has the potential to improve the overall quality of data products greatly, primarily through the use of higher-quality remote sensing datasets. Additionally, the BLM and the Multi-Resolution Land Characteristics Consortium (MRLC) are working to improve the accuracy of vegetation map products for broad- and mid-scale analyses through the Grass/Shrub mapping effort. The Grass/Shrub mapping effort applies the Wyoming multiscale sagebrush habitat methodology (Homer et al. 2009) to depict spatially the fractional percent cover estimates for five components rangewide and West-wide. These five components are percent cover of sagebrush vegetation, percent bare ground, percent herbaceous vegetation (grass and forbs combined), annual vegetation, and percent shrubs. A benefit of the design of these fractional cover maps is that they facilitate monitoring "within" class variation (e.g., examination of declining trend in sagebrush cover for individual pixels). This "within" class variation can serve as one indicator of sagebrush quality that cannot be derived from LANDFIRE's EVT information. The Grass/Shrub mapping effort is not a substitute for fine-scale monitoring but will leverage fine-scale data to support the validation of the mapping products. An evaluation will be conducted to determine if either dataset is of great enough quality to warrant replacing the existing sagebrush layers. At the earliest, this evaluation will occur in 2018 or 2019, depending on data availability.

## **B.2. Habitat Degradation Monitoring (Measure 2)**

The measure of habitat degradation will be calculated by combining the footprints of threats identified in Table 2. The footprint is defined as the direct area of influence of “active” energy and infrastructure; it is used as a surrogate for human activity. Although these analyses will try to summarize results at the aforementioned meaningful geographic areas of interest, some may be too small to report the metrics appropriately and may be combined (smaller populations, PACs within a population, etc.). Data sources for each threat are found in Table 6, Geospatial data sources for habitat degradation. Specific assumptions (inclusion criteria for data, width/area assumptions for point and line features, etc.) and methodology for each threat, and the combined measure, are detailed below. All datasets will be updated annually to monitor broad- and mid-scale year-to-year changes and to calculate trends in habitat degradation to inform adaptive management. A 5-year summary report will be provided to the USFWS.

### **a. Habitat Degradation Datasets and Assumptions**

#### ***Energy (oil and gas wells and development facilities)***

This dataset will compile information from three oil and gas databases: the proprietary IHS Enerdeq database, the BLM Automated Fluid Minerals Support System (AFMSS) database, and the proprietary Platts (a McGraw-Hill Financial Company) GIS Custom Data (hereafter, Platts) database of power plants. Point data from wells active within the last 10 years from IHS and producing wells from AFMSS will be considered as a 5-acre (2.0ha) direct area of influence centered on the well point, as recommended by the BLM WO-300 (Minerals and Realty Management). Plugged and abandoned wells will be removed if the date of well abandonment was before the first day of the reporting year (i.e., for the 2015 reporting year, a well must have been plugged and abandoned by 12/31/2014 to be removed). Platts oil and gas power plants data (subset to operational power plants) will also be included as a 5-acre (2.0ha) direct area of influence.

***Additional Measure: Reclaimed Energy-related Degradation.*** This dataset will include those wells that have been plugged and abandoned. This measure thereby attempts to measure energy-related degradation that has been reclaimed but not necessarily fully restored to sage-grouse habitat. This measure will establish a baseline by using wells that have been plugged and abandoned within the last 10 years from the IHS and AFMSS datasets. Time lags for lek attendance in response to infrastructure have been documented to be delayed 2–10 years from energy development activities (Harju et al. 2010). Reclamation actions may require 2 or more years from the Final Abandonment Notice. Sagebrush seedling establishment may take 6 or more years from the point of seeding, depending on such variables as annual precipitation, annual temperature, and soil type and depth (Pyke 2011). This 10-year period is conservative and assumes some level of habitat improvement 10 years after plugging. Research by Hemstrom et al. (2002), however,

proposes an even longer period—more than 100 years—for recovery of sagebrush habitats, even with active restoration approaches. Direct area of influence will be considered 3 acres (1.2ha) (J. Perry, personal communication, February 12, 2014). This additional layer/measure could be used at the broad and mid scale to identify areas where sagebrush habitat and/or potential sagebrush habitat is likely still degraded. This layer/measure could also be used where further investigation at the fine or site scale would be warranted to: 1) quantify the level of reclamation already conducted, and 2) evaluate the amount of restoration still required for sagebrush habitat recovery. At a particular level (e.g., population, PACs), these areas and the reclamation efforts/success could be used to inform reclamation standards associated with future developments. Once these areas have transitioned from reclamation standards to meeting *restoration* standards, they can be added back into the sagebrush availability layer using the same methodology as described for adding restoration treatment areas lost to wildfire and agriculture conversion (see Monitoring Sagebrush Restoration in Section I.B.1.b., Monitoring Sagebrush Availability). This dataset will be updated annually from the IHS dataset.

### ***Energy (coal mines)***

Currently, there is no comprehensive dataset available that identifies the footprint of active coal mining across all jurisdictions. Therefore, point and polygon datasets will be used each year to identify coal mining locations. Data sources will be identified and evaluated annually and will include at a minimum: BLM coal lease polygons, U.S. Energy Information Administration mine occurrence points, U.S. Office of Surface Mining Reclamation and Enforcement coal mining permit polygons (as available), and U.S. Geological Survey (USGS) Mineral Resources Data System mine occurrence points. These data will inform where active coal mining may be occurring. Additionally, coal power plant data from Platts power plants database (subset to operational power plants) will be included. Aerial imagery will then be used to digitize manually the active coal mining and coal power plants surface disturbance in or near these known occurrence areas. While the date of aerial imagery varies by scale, the most current data available from Esri and/or Google will be used to locate (generally at 1:50,000 and below) and digitize (generally at 1:10,000 and below) active coal mine and power plant direct area of influence. Coal mine location data source and imagery date will be documented for each digitized coal polygon at the time of creation. Subsurface facility locations (polygon or point location as available) will also be collected if available, included in density calculations, and added to the active surface activity layer as appropriate (if an actual direct area of influence can be located).

### ***Energy (wind energy facilities)***

This dataset will be a subset of the Federal Aviation Administration (FAA) Digital Obstacles point file. Points where “Type\_” = “WINDMILL” will be included. Direct area of influence of these point features will be measured by converting to a polygon dataset as a direct area of

influence of 3 acres (1.2ha) centered on each tower point. See the BLM's "Wind Energy Development Programmatic Environmental Impact Statement" (BLM 2005). Additionally, Platts power plants database will be used for transformer stations associated with wind energy sites (subset to operational power plants), also with a 3-acre (1.2ha) direct area of influence.

### ***Energy (solar energy facilities)***

This dataset will include solar plants as compiled with the Platts power plants database (subset to operational power plants). This database includes an attribute that indicates the operational capacity of each solar power plant. Total capacity at the power plant was based on ratings of the in-service unit(s), in megawatts. Direct area of influence polygons will be centered over each point feature representing 7.3ac (3.0ha) per megawatt of the stated operational capacity, per the report of the National Renewable Energy Laboratory (NREL), "Land-Use Requirements for Solar Power Plants in the United States" (Ong et al. 2013).

### ***Energy (geothermal energy facilities)***

This dataset will include geothermal wells in existence or under construction as compiled with the IHS wells database and power plants as compiled with the Platts database (subset to operational power plants). Direct area of influence of these point features will be measured by converting to a polygon dataset of 3 acres (1.2ha) centered on each well or power plant point.

### ***Mining (active developments; locatable, leasable, saleable)***

This dataset will include active locatable mining locations as compiled with the proprietary InfoMine database. Aerial imagery will then be used to digitize manually the active mining surface disturbance in or near these known occurrence areas. While the date of aerial imagery varies by scale, the most current data available from Esri and/or Google will be used to locate (generally at 1:50,000 and below) and digitize (generally at 1:10,000 and below) active mine direct area of influence. Mine location data source and imagery date will be documented for each digitized polygon at the time of creation. Currently, there are no known compressive databases available for leasable or saleable mining sites beyond coal mines. Other data sources will be evaluated and used as they are identified or as they become available. Point data may be converted to polygons to represent direct area of influence unless actual surface disturbance is available.

### ***Infrastructure (roads)***

This dataset will be compiled from the proprietary Esri StreetMap Premium for ArcGIS. Dataset features that will be used are: Interstate Highways, Major Roads, and Surface Streets to capture most paved and "crowned and ditched" roads while not including "two-track" and 4-wheel-drive routes. These minor roads, while not included in the broad- and mid-scale monitoring, may support a volume of traffic that can have deleterious effects on sage-grouse leks. It may be

appropriate to consider the frequency and type of use of roads in a NEPA analysis for a proposed project. This fine- and site-scale analysis will require more site-specific data than is identified in this monitoring framework. The direct area of influence for roads will be represented by 240.2ft, 84.0ft, and 40.7ft (73.2m, 25.6m, and 12.4m) total widths centered on the line feature for Interstate Highways, Major Roads, and Surface Streets, respectively (Knick et al. 2011). The most current dataset will be used for each monitoring update. *Note: This is a related but different dataset than what was used in BER (Manier et al. 2013). Individual BLM/USFS planning units may use different road layers for fine- and site-scale monitoring.*

### ***Infrastructure (railroads)***

This dataset will be a compilation from the Federal Railroad Administration Rail Lines of the USA dataset. Non-abandoned rail lines will be used; abandoned rail lines will not be used. The direct are of influence for railroads will be represented by a 30.8ft (9.4m) total width (Knick et al. 2011) centered on the non-abandoned railroad line feature.

### ***Infrastructure (power lines)***

This line dataset will be derived from the proprietary Platts transmission lines database. Linear features in the dataset attributed as “buried” will be removed from the disturbance calculation. Only “In Service” lines will be used; “Proposed” lines will not be used. Direct area of influence will be determined by the kV designation: 1–199 kV (100ft/30.5m), 200–399 kV (150ft/45.7m), 400–699 kV (200ft/61.0m), and 700-or greater kV (250ft/76.2m) based on average right-of-way and structure widths, according to BLM WO-300 (Minerals and Realty Management).

### ***Infrastructure (communication towers)***

This point dataset will be compiled from the Federal Communications Commission (FCC) communication towers point file; all duplicate points will be removed. It will be converted to a polygon dataset by using a direct area of influence of 2.5 acres (1.0ha) centered on each communication tower point (Knick et al. 2011).

### ***Infrastructure (other vertical structures)***

This point dataset will be compiled from the FAA’s Digital Obstacles point file. Points where “Type\_” = “WINDMILL” will be removed. Duplicate points from the FCC communication towers point file will be removed. Remaining features will be converted to a polygon dataset using a direct area of influence of 2.5 acres (1.0ha) centered on each vertical structure point (Knick et al. 2011).

### ***Other Developed Rights-of-Way***

Currently, no additional data sources for other rights-of-way have been identified; roads, power lines, railroads, pipelines, and other known linear features are represented in the categories

described above. The newly purchased IHS data do contain pipeline information; however, this database does not currently distinguish between above-ground and underground pipelines. If additional features representing human activities are identified, they will be added to monitoring reports using similar assumptions to those used with the threats described above.

#### **b. Habitat Degradation Threat Combination and Calculation**

The threats targeted for measuring human activity (Table 2) will be converted to direct area of influence polygons as described for each threat above. These threat polygon layers will be combined and features dissolved to create one overall polygon layer representing footprints of active human activity in the range of sage-grouse. Individual datasets, however, will be preserved to indicate which types of threats may be contributing to overall habitat degradation.

This measure has been divided into three submeasures to describe habitat degradation on the landscape. Percentages will be calculated as follows:

Measure 2a. Footprint by geographic area of interest: Divide area of the active/direct footprint by the total area of the geographic area of interest (% disturbance in geographic area of interest).

Measure 2b. Active/direct footprint by historical sagebrush potential: Divide area of the active footprint that coincides with areas with historical sagebrush potential (BpS calculation from habitat availability) within a given geographic area of interest by the total area with sagebrush potential within the geographic area of interest (% disturbance on potential historical sagebrush in geographic area of interest).

Measure 2c. Active/direct footprint by current sagebrush: Divide area of the active footprint that coincides with areas of existing sagebrush (EVT calculation from habitat availability) within a given geographic area of interest by the total area that is current sagebrush within the geographic area of interest (% disturbance on current sagebrush in geographic area of interest).

### **B.3. Energy and Mining Density (Measure 3)**

The measure of density of energy and mining will be calculated by combining the locations of energy and mining threats identified in Table 2. This measure will provide an estimate of the intensity of human activity or the intensity of habitat degradation. The number of energy facilities and mining locations will be summed and divided by the area of meaningful geographic areas of interest to calculate density of these activities. Data sources for each threat are found in Table 6. Specific assumptions (inclusion criteria for data, width/area assumptions for point and line features, etc.) and methodology for each threat, and the combined measure, are detailed

below. All datasets will be updated annually to monitor broad- and mid-scale year-to-year changes and 5-year (or longer) trends in habitat degradation.

**Table 6.** Geospatial data sources for habitat degradation (Measure 2).

<b>Degradation Type</b>	<b>Subcategory</b>	<b>Data Source</b>	<b>Direct Area of Influence</b>	<b>Area Source</b>
<b>Energy (oil &amp; gas)</b>	Wells	IHS; BLM (AFMSS)	5.0ac (2.0ha)	BLM WO-300
	Power Plants	Platts (power plants)	5.0ac (2.0ha)	BLM WO-300
<b>Energy (coal)</b>	Mines	BLM; USFS; Office of Surface Mining Reclamation and Enforcement; USGS Mineral Resources Data System	Polygon area (digitized)	Esri/Google Imagery
	Power Plants	Platts (power plants)	Polygon area (digitized)	Esri Imagery
<b>Energy (wind)</b>	Wind Turbines	Federal Aviation Administration	3.0ac (1.2ha)	BLM WO-300
	Power Plants	Platts (power plants)	3.0ac (1.2ha)	BLM WO-300
<b>Energy (solar)</b>	Fields/Power Plants	Platts (power plants)	7.3ac (3.0ha)/MW	NREL
<b>Energy (geothermal)</b>	Wells	IHS	3.0ac (1.2ha)	BLM WO-300
	Power Plants	Platts (power plants)	Polygon area (digitized)	Esri Imagery
<b>Mining</b>	Locatable Developments	InfoMine	Polygon area (digitized)	Esri Imagery
<b>Infrastructure (roads)</b>	Surface Streets (Minor Roads)	Esri StreetMap Premium	40.7ft (12.4m)	USGS
	Major Roads	Esri StreetMap Premium	84.0ft (25.6m)	USGS
	Interstate Highways	Esri StreetMap Premium	240.2ft (73.2m)	USGS
<b>Infrastructure (railroads)</b>	Active Lines	Federal Railroad Administration	30.8ft (9.4m)	USGS
<b>Infrastructure (power lines)</b>	1-199kV Lines	Platts (transmission lines)	100ft (30.5m)	BLM WO-300
	200-399 kV Lines	Platts (transmission lines)	150ft (45.7m)	BLM WO-300
	400-699kV Lines	Platts (transmission lines)	200ft (61.0m)	BLM WO-300
	700+kV Lines	Platts (transmission lines)	250ft (76.2m)	BLM WO-300
<b>Infrastructure (communication)</b>	Towers	Federal Communications Commission	2.5ac (1.0ha)	BLM WO-300

#### **a. Energy and Mining Density Datasets and Assumptions**

##### ***Energy (oil and gas wells and development facilities)***

(See Section I.B.2., Habitat Degradation Monitoring.)

##### ***Energy (coal mines)***

(See Section I.B.2., Habitat Degradation Monitoring.)

##### ***Energy (wind energy facilities)***

(See Section I.B.2., Habitat Degradation Monitoring.)

##### ***Energy (solar energy facilities)***

(See Section I.B.2., Habitat Degradation Monitoring.)

##### ***Energy (geothermal energy facilities)***

(See Section I.B.2., Habitat Degradation Monitoring.)

##### ***Mining (active developments; locatable, leasable, saleable)***

(See Section I.B.2., Habitat Degradation Monitoring.)

#### **b. Energy and Mining Density Threat Combination and Calculation**

Datasets for energy and mining will be collected in two primary forms: point locations (e.g., wells) and polygon areas (e.g., surface coal mining). The following rule set will be used to calculate density for meaningful geographic areas of interest including standard grids and per polygon:

- 1) Point locations will be preserved; no additional points will be removed beyond the methodology described above. Energy facilities in close proximity (an oil well close to a wind tower) will be retained.
- 2) Polygons will not be merged, or features further dissolved. Thus, overlapping facilities will be retained, such that each individual threat will be a separate polygon data input for the density calculation.
- 3) The analysis unit (polygon or 640-acre section in a grid) will be the basis for counting the number of mining or energy facilities per unit area. Within the analysis unit, all point features will be summed, and any individual polygons will be counted as one (e.g., a coal mine will be counted as one facility within population). Where polygon features overlap multiple units (polygons or pixels), the facility will be counted as one in each unit where the polygon occurs (e.g., a polygon crossing multiple 640-acre

sections would be counted as one in each 640-acre section for a density per 640-acre-section calculation).

- 4) In methodologies with different-sized units (e.g., MZs, populations, etc.) raw facility counts will be converted to densities by dividing the raw facility counts by the total area of the unit. Typically this will be measured as facilities per 640 acres.
- 5) For uniform grids, raw facility counts will be reported. Typically this number will also be converted to facilities per 640 acres.
- 6) Reporting may include summaries beyond the simple ones above. Zonal statistics may be used to smooth smaller grids to help display and convey information about areas within meaningful geographic areas of interest that have high levels of energy and/or mining activity.
- 7) Additional statistics for each defined unit may also include adjusting the area to include only the area with the historical potential for sagebrush (BpS) or areas currently sagebrush (EVT).

Individual datasets and threat combination datasets for habitat degradation will be available through the BLM's EGIS web portal and geospatial gateway. Legacy datasets will be preserved so that trends may be calculated.

### **C. Population (Demographics) Monitoring**

State wildlife management agencies are responsible for monitoring sage-grouse populations within their respective states. WAFWA will coordinate this collection of annual population data by state agencies. These data will be made available to the BLM according to the terms of the forthcoming Greater Sage-Grouse Population Monitoring Memorandum of Understanding (MOU) (2014) between WAFWA and the BLM. The MOU outlines a process, timeline, and responsibilities for regular data sharing of sage-grouse population and/or habitat information for the purposes of implementing sage-grouse LUPs/amendments and subsequent effectiveness monitoring. Population areas were refined from the "Greater Sage-grouse (*Centrocercus urophasianus*) Conservation Objectives: Final Report" (COT 2013) by individual state wildlife agencies to create a consistent naming nomenclature for future data analyses. These population data will be used for analysis at the applicable scale to supplement habitat effectiveness monitoring of management actions and to inform the adaptive management responses.

### **D. Effectiveness Monitoring**

Effectiveness monitoring will provide the data needed to evaluate BLM and USFS actions toward reaching the objective of the national planning strategy (BLM IM 2012-044)—to conserve sage-grouse populations and their habitat—and the objectives for the land use planning

area. Effectiveness monitoring methods described here will encompass multiple larger scales, from areas as large as the WAFWA MZ to the scale of this LUP. Effectiveness data used for these larger-scale evaluations will include all lands in the area of interest, regardless of surface ownership/management, and will help inform where finer-scale evaluations are needed, such as population areas smaller than an LUP or PACs within an LUP (described in Section II, Fine and Site Scales). Data will also include the trend of disturbance within these areas of interest to inform the need to initiate adaptive management responses as described in the land use plan.

Effectiveness monitoring reported for these larger areas provides the context to conduct effectiveness monitoring at finer scales. This approach also helps focus scarce resources to areas experiencing habitat loss, degradation, or population declines, without excluding the possibility of concurrent, finer-scale evaluations as needed where habitat or population anomalies have been identified through some other means.

To determine the effectiveness of the sage-grouse national planning strategy, the BLM and the USFS will evaluate the answers to the following questions and prepare a broad- and mid-scale effectiveness report:

- 1) Sagebrush Availability and Condition:
  - a. What is the amount of sagebrush availability and the change in the amount and condition of sagebrush?
  - b. What is the existing amount of sagebrush on the landscape and the change in the amount relative to the pre-EuroAmerican historical distribution of sagebrush (BpS)?
  - c. What is the trend and condition of the indicators describing sagebrush characteristics important to sage-grouse?
- 2) Habitat Degradation and Intensity of Activities:
  - a. What is the amount of habitat degradation and the change in that amount?
  - b. What is the intensity of activities and the change in the intensity?
  - c. What is the amount of reclaimed energy-related degradation and the change in the amount?
- 3) What is the population estimation of sage-grouse and the change in the population estimation?
- 4) How are the BLM and the USFS contributing to changes in the amount of sagebrush?
- 5) How are the BLM and the USFS contributing to disturbance?

The compilation of broad- and mid-scale data (and population trends as available) into an effectiveness monitoring report will occur on a 5-year reporting schedule (see Attachment A), which may be accelerated to respond to critical emerging issues (in consultation with the USFWS and state wildlife agencies). In addition, effectiveness monitoring results will be used to identify emerging issues and research needs and inform the BLM and the USFS adaptive

management strategy (see the adaptive management section of this Environmental Impact Statement).

To determine the effectiveness of the sage-grouse objectives of the land use plan, the BLM and the USFS will evaluate the answers to the following questions and prepare a plan effectiveness report:

- 1) Is this plan meeting the sage-grouse habitat objectives?
- 2) Are sage-grouse areas within the LUP meeting, or making progress toward meeting, land health standards, including the Special Status Species/wildlife habitat standard?
- 3) Is the plan meeting the disturbance objective(s) within sage-grouse areas?
- 4) Are the sage-grouse populations within this plan boundary and within the sage-grouse areas increasing, stable, or declining?

The effectiveness monitoring report for this LUP will occur on a 5-year reporting schedule (see Attachment A) or more often if habitat or population anomalies indicate the need for an evaluation to facilitate adaptive management or respond to critical emerging issues. Data will be made available through the BLM's EGIS web portal and the geospatial gateway.

### ***Methods***

At the broad and mid scales (PACs and above) the BLM and the USFS will summarize the vegetation, disturbance, and (when available) population data. Although the analysis will try to summarize results for PACs within each sage-grouse population, some populations may be too small to report the metrics appropriately and may need to be combined to provide an estimate with an acceptable level of accuracy. Otherwise, they will be flagged for more intensive monitoring by the appropriate landowner or agency. The BLM and the USFS will then analyze monitoring data to detect the trend in the amount of sagebrush; the condition of the vegetation in the sage-grouse areas (MacKinnon et al. 2011); the trend in the amount of disturbance; the change in disturbed areas owing to successful restoration; and the amount of new disturbance the BLM and/or the USFS has permitted. These data could be supplemented with population data (when available) to inform an understanding of the correlation between habitat and PACs within a population. This overall effectiveness evaluation must consider the lag effect response of populations to habitat changes (Garton et al. 2011).

*Calculating Question 1, National Planning Strategy Effectiveness:* The amount of sagebrush available in the large area of interest will use the information from Measure 1a (I.B.1., Sagebrush Availability) and calculate the change from the 2012 baseline to the end date of the reporting period. To calculate the change in the amount of sagebrush on the landscape to compare with the historical areas with potential to support sagebrush, the information from Measure 1b (I.B.1., Sagebrush Availability) will be used. To calculate the trend in the condition of sagebrush at the mid scale, three sources of data will be used: the BLM's Grass/Shrub mapping effort (Future Plans in Section I.B.1., Sagebrush Availability); the results from the calculation of the landscape

indicators, such as patch size (described below); and the BLM's Landscape Monitoring Framework (LMF) and sage-grouse intensification effort (also described below). The LMF and sage-grouse intensification effort data are collected in a statistical sampling framework that allows calculation of indicator values at multiple scales.

Beyond the importance of sagebrush availability to sage-grouse, the mix of sagebrush patches on the landscape at the broad and mid scale provides the life requisite of space for sage-grouse dispersal needs (see the HAF). The configuration of sagebrush habitat patches and the land cover or land use between the habitat patches at the broad and mid scales also defines suitability. There are three significant habitat indicators that influence habitat use, dispersal, and movement across populations: the size and number of habitat patches, the connectivity of habitat patches (linkage areas), and habitat fragmentation (scope of unsuitable and non-habitats between habitat patches). The most appropriate commercial software to measure patch dynamics, connectivity, and fragmentation at the broad and mid scales will be used, along with the same data layers derived for sagebrush availability.

The BLM initiated the LMF in 2011 in cooperation with the Natural Resources Conservation Service (NRCS). The objective of the LMF effort is to provide unbiased estimates of vegetation and soil condition and trend using a statistically balanced sample design across BLM lands. Recognizing that sage-grouse populations are more resilient where the sagebrush plant community has certain characteristics unique to a particular life stage of sage-grouse (Knick and Connelly 2011, Stiver et al. *in press*), a group of sage-grouse habitat and sagebrush plant community subject matter experts identified those vegetation indicators collected at LMF sampling points that inform sage-grouse habitat needs. The experts represented the Agricultural Research Service, BLM, NRCS, USFWS, WAFWA, state wildlife agencies, and academia. The common indicators identified include: species composition, foliar cover, height of the tallest sagebrush and herbaceous plant, intercanopy gap, percent of invasive species, sagebrush shape, and bare ground. To increase the precision of estimates of sagebrush conditions within the range of sage-grouse, additional plot locations in occupied sage-grouse habitat (Sage-Grouse Intensification) were added in 2013. The common indicators are also collected on sampling locations in the NRCS National Resources Inventory Rangeland Resource Assessment (<http://www.nrcs.usda.gov/wps/portal/nrcs/detail/national/technical/nra/nri/?&cid=stelprdb1041620>).

The sage-grouse intensification baseline data will be collected over a 5-year period, and an annual sage-grouse intensification report will be prepared describing the status of the indicators. Beginning in year 6, the annual status report will be accompanied with a trend report, which will be available on an annual basis thereafter, contingent on continuation of the current monitoring budget. This information, in combination with the Grass/Shrub mapping information, the mid-scale habitat suitability indicator measures, and the sagebrush availability information will be used to answer Question 1 of the National Planning Strategy Effectiveness Report.

*Calculating Question 2, National Planning Strategy Effectiveness:* Evaluations of the amount of habitat degradation and the intensity of the activities in the area of interest will use the information from Measure 2 (Section I.B.2., Habitat Degradation Monitoring) and Measure 3 (Section I.B.3., Energy and Mining Density). The field office will collect data on the amount of reclaimed energy-related degradation on plugged and abandoned and oil/gas well sites. The data are expected to demonstrate that the reclaimed sites have yet to meet the habitat restoration objectives for sage-grouse habitat. This information, in combination with the amount of habitat degradation, will be used to answer Question 2 of the National Planning Strategy Effectiveness Report.

*Calculating Question 3, National Planning Strategy Effectiveness:* The change in sage-grouse estimated populations will be calculated from data provided by the state wildlife agencies, when available. This population data (Section I.C., Population [Demographics] Monitoring) will be used to answer Question 3 of the National Planning Strategy Effectiveness Report.

*Calculating Question 4, National Planning Strategy Effectiveness:* The estimated contribution by the BLM or the USFS to the change in the amount of sagebrush in the area of interest will use the information from Measure 1a (Section I.B.1., Sagebrush Availability). This measure is derived from the national datasets that remove sagebrush (Table 3). To determine the relative contribution of BLM and USFS management, the current Surface Management Agency geospatial data layer will be used to differentiate the amount of change for each management agency for this measure in the geographic areas of interest. This information will be used to answer Question 4 of the National Planning Strategy Effectiveness Report.

*Calculating Question 5, National Planning Strategy Effectiveness:* The estimated contribution by the BLM or the USFS to the change in the amount of disturbance in the area of interest will use the information from Measure 2a (Section I.B.2., Monitoring Habitat Degradation) and Measure 3 (Section I.B.3., Energy and Mining Density). These measures are all derived from the national disturbance datasets that degrade habitat (Table 6). To determine the relative contribution of BLM and USFS management, the current Surface Management Agency geospatial data layer will be used to differentiate the amount of change for each management agency for these two measures in the geographic areas of interest. This information will be used to answer Question 5 of the National Planning Strategy Effectiveness Report.

Answers to the five questions for determining the effectiveness of the national planning strategy will identify areas that appear to be meeting the objectives of the strategy and will facilitate identification of population areas for more detailed analysis. Conceptually, if the broad-scale monitoring identifies increasing sagebrush availability and improving vegetation conditions, decreasing disturbance, and a stable or increasing population for the area of interest, there is evidence that the objectives of the national planning strategy to maintain populations and their habitats have been met. Conversely, where information indicates that sagebrush is decreasing and vegetation conditions are degrading, disturbance in sage-grouse areas is increasing, and/or

populations are declining relative to the baseline, there is evidence that the objectives of the national planning strategy are not being achieved. Such a determination would likely result in a more detailed analysis and could be the basis for implementing more restrictive adaptive management measures.

With respect to the land use plan area, the BLM and the USFS will summarize the vegetation, disturbance, and population data to determine if the LUP is meeting the plan objectives. Effectiveness information used for these evaluations includes BLM/USFS surface management areas and will help inform where finer-scale evaluations are needed, such as seasonal habitats, corridors, or linkage areas. Data will also include the trend of disturbance within the sage-grouse areas, which will inform the need to initiate adaptive management responses as described in the land use plan.

*Calculating Question 1, Land Use Plan Effectiveness:* The condition of vegetation and the allotments meeting land health standards (as articulated in “BLM Handbook 4180-1, Rangeland Health Standards”) in sage-grouse areas will be used to determine the LUP’s effectiveness in meeting the vegetation objectives for sage-grouse habitat set forth in the plan. The field office/ranger district will be responsible for collecting this data. In order for this data to be consistent and comparable, common indicators, consistent methods, and an unbiased sampling framework will be implemented following the principles in the BLM’s AIM strategy (Taylor et al. 2014; Toeys et al. 2011; MacKinnon et al. 2011), in the BLM’s Technical Reference “Interpreting Indicators of Rangeland Health” (Pellant et al. 2005), and in the HAF (Stiver et al. *in press*) or other approved WAFWA MZ-consistent guidance to measure and monitor sage-grouse habitats. This information will be used to answer Question 1 of the Land Use Plan Effectiveness Report.

*Calculating Question 2, Land Use Plan Effectiveness:* Sage-grouse areas within the LUP that are achieving land health stands (or, if trend data are available, that are making progress toward achieving them)—particularly the Special Status Species/wildlife habitat land health standard—will be used to determine the LUP’s effectiveness in achieving the habitat objectives set forth in the plan. Field offices will follow directions in “BLM Handbook 4180-1, Rangeland Health Standards,” to ascertain if sage-grouse areas are achieving or making progress toward achieving land health standards. One of the recommended criteria for evaluating this land health standard is the HAF indicators.

*Calculating Question 3, Land Use Plan Effectiveness:* The amount of habitat disturbance in sage-grouse areas identified in this LUP will be used to determine the LUP’s effectiveness in meeting the plan’s disturbance objectives. National datasets can be used to calculate the amount of disturbance, but field office data will likely increase the accuracy of this estimate. This information will be used to answer Question 3 of the Land Use Plan Effectiveness Report.

*Calculating Question 4, Land Use Plan Effectiveness:* The change in estimated sage-grouse populations will be calculated from data provided by the state wildlife agencies, when available, and will be used to determine LUP effectiveness. This population data (Section I.C., Population [Demographics] Monitoring) will be used to answer Question 4 of the Land Use Plan Effectiveness Report.

Results of the effectiveness monitoring process for the LUP will be used to inform the need for finer-scale investigations, initiate adaptive management actions as described in the land use plan, initiate causation determination, and/or determine if changes to management decisions are warranted. The measures used at the broad and mid scales will provide a suite of characteristics for evaluating the effectiveness of the adaptive management strategy.

## **II. FINE AND SITE SCALES**

Fine-scale (third-order) habitat selected by sage-grouse is described as the physical and geographic area within home ranges during breeding, summer, and winter periods. At this level, habitat suitability monitoring should address factors that affect sage-grouse use of, and movements between, seasonal use areas. The habitat monitoring at the fine and site scale (fourth order) should focus on indicators to describe seasonal home ranges for sage-grouse associated with a lek or lek group within a population or subpopulation area. Fine- and site-scale monitoring will inform LUP effectiveness monitoring (see Section I.D., Effectiveness Monitoring) and the hard and soft triggers identified in the LUP's adaptive management section.

Site-scale habitat selected by sage-grouse is described as the more detailed vegetation characteristics of seasonal habitats. Habitat suitability characteristics include canopy cover and height of sagebrush and the associated understory vegetation. They also include vegetation associated with riparian areas, wet meadows, and other mesic habitats adjacent to sagebrush that may support sage-grouse habitat needs during different stages in their annual cycle.

As described in the Conclusion (Section III), details and application of monitoring at the fine and site scales will be described in the implementation-level monitoring plan for the land use plan. The need for fine- and site-scale-specific habitat monitoring will vary by area, depending on proposed projects, existing conditions, habitat variability, threats, and land health. Examples of fine- and site-scale monitoring include: habitat vegetation monitoring to assess current habitat conditions; monitoring and evaluation of the success of projects targeting sage-grouse habitat enhancement and/or restoration; and habitat disturbance monitoring to provide localized disturbance measures to inform proposed project review and potential mitigation for project impacts. Monitoring plans should incorporate the principles outlined in the BLM's AIM strategy (Toevs et al. 2011) and in "AIM-Monitoring: A Component of the Assessment, Inventory, and Monitoring Strategy" (Taylor et al. 2014). Approved monitoring methods are:

- “BLM Core Terrestrial Indicators and Methods” (MacKinnon et al. 2011);
- The BLM’s Technical Reference “Interpreting Indicators of Rangeland Health” (Pellant et al. 2005); and,
- “Sage-Grouse Habitat Assessment Framework: Multiscale Assessment Tool” (Stiver et al. *in press*).

Other state-specific disturbance tracking models include: the BLM’s Wyoming Density and Disturbance Calculation Tool (<http://ddct.wygisc.org/>) and the BLM’s White River Data Management System in development with the USGS. Population monitoring data (in cooperation with state wildlife agencies) should be included during evaluation of the effectiveness of actions taken at the fine and site scales.

Fine- and site-scale sage-grouse habitat suitability indicators for seasonal habitats are identified in the HAF. The HAF has incorporated the Connelly et al. (2000) sage-grouse guidelines as well as many of the core indicators in the AIM strategy (Toevs et al. 2011). There may be a need to develop adjustments to height and cover or other site suitability values described in the HAF; any such adjustments should be ecologically defensible. To foster consistency, however, adjustments to site suitability values at the local scale should be avoided unless there is strong, scientific justification for making those adjustments. That justification should be provided. WAFWA MZ adjustments must be supported by regional plant productivity and habitat data for the floristic province. If adjustments are made to the site-scale indicators, they must be made using data from the appropriate seasonal habitat designation (breeding/nesting, brood-rearing, winter) collected from sage-grouse studies found in the relevant area and peer-reviewed by the appropriate wildlife management agency(ies) and researchers.

When conducting land health assessments, the BLM should follow, at a minimum, “Interpreting Indicators of Rangeland Health” (Pellant et al. 2005) and the “BLM Core Terrestrial Indicators and Methods” (MacKinnon et al. 2011). For assessments being conducted in sage-grouse designated management areas, the BLM should collect additional data to inform the HAF indicators that have not been collected using the above methods. Implementation of the principles outlined in the AIM strategy will allow the data to be used to generate unbiased estimates of condition across the area of interest; facilitate consistent data collection and rollup analysis among management units; help provide consistent data to inform the classification and interpretation of imagery; and provide condition and trend of the indicators describing sagebrush characteristics important to sage-grouse habitat (see Section I.D., Effectiveness Monitoring).

### **III. CONCLUSION**

This Greater Sage-Grouse Monitoring Framework was developed for all of the Final Environmental Impact Statements involved in the sage-grouse planning effort. As such, it describes the monitoring activities at the broad and mid scales and provides a guide for the BLM and the USFS to collaborate with partners/other agencies to develop the land use plan- specific monitoring plan.

### **IV. THE GREATER SAGE-GROUSE DISTURBANCE AND MONITORING SUBTEAM MEMBERSHIP**

Gordon Toeve (BLM -WO)	Robin Sell (BLM-CO)
Duane Dippon (BLM-WO)	Paul Makela (BLM-ID)
Frank Quamen (BLM-NOC)	Renee Chi (BLM-UT)
David Wood (BLM-NOC)	Sandra Brewer (BLM-NV)
Vicki Herren (BLM-NOC)	Glenn Frederick (BLM-OR)
Matt Bobo (BLM-NOC)	Robert Skorkowsky (USFS)
Michael “Sherm” Karl (BLM-NOC)	Dalinda Damm (USFS)
Emily Kachergis (BLM-NOC)	Rob Mickelsen (USFS)
Doug Havlina (BLM-NIFC)	Tim Love (USFS)
Mike Pellant (BLM-GBRI)	Pam Bode (USFS)
John Carlson (BLM-MT)	Lief Wiechman (USFWS)
Jenny Morton (BLM -WY)	Lara Juliusson (USFWS)



## LITERATURE CITED

- Baruch-Mordo, S., J.S. Evans, J.P. Severson, D.E. Naugle, J.D. Maestas, J.M. Kiesecker, M.J. Falkowski, C.A. Hagen, and K.P. Reese. 2013. Saving sage-grouse from the trees: A proactive solution to reducing a key threat to a candidate species. *Biological Conservation* 167:233–241.
- Connelly, J.W., S.T. Knick, M.A. Schroeder, and S.J. Stiver. 2004. Conservation assessment of Greater Sage-Grouse and sagebrush habitats. Unpublished report. Western Association of Fish and Wildlife Agencies, Cheyenne, WY. Available at [http://sagemap.wr.usgs.gov/docs/Greater\\_Sage-grouse\\_Conservation\\_Assessment\\_060404.pdf](http://sagemap.wr.usgs.gov/docs/Greater_Sage-grouse_Conservation_Assessment_060404.pdf).
- Connelly, J.W., K.P. Reese, and M.A. Schroeder. 2003. Monitoring of Greater Sage-Grouse habitats and populations. Station Bulletin 80. College of Natural Resources Experiment Station, University of Idaho, Moscow, ID.
- Connelly, J.W., M.A. Schroeder, A.R. Sands, and C.E. Braun. 2000. Guidelines to manage sage grouse populations and their habitats. *Wildlife Society Bulletin* 28:967–985.
- Davies, K.W., C.S. Boyd, J.L. Beck, J.D. Bates, T.J. Svejcar, and M.A. Gregg. 2011. Saving the sagebrush sea: An ecosystem conservation plan for big sagebrush plant communities. *Biological Conservation* 144:2573–2584.
- Fry, J.A., G. Xian, S. Jin, J.A. Dewitz, C.G. Homer, L. Yang, C.A. Barnes, N.D. Herold, and J.D. Wickham. 2011. Completion of the 2006 National Land Cover Database for the conterminous United States. *PE&RS* 77(9):858–864.
- Garton, E.O., J.W. Connelly, J.S. Horne, C.A. Hagen, A. Moser, and M. Schroeder. 2011. Greater Sage-Grouse population dynamics and probability of persistence. *In* *Greater Sage-Grouse: Ecology and conservation of a landscape species and its habitats*, edited by S.T. Knick and J.W. Connelly, 293–382. *Studies in Avian Biology*, vol. 38. University of California Press, Berkeley, CA.
- Grove, A.J., C.L. Wambolt, and M.R. Frisina. 2005. Douglas-fir's effect on mountain big sagebrush wildlife habitats. *Wildlife Society Bulletin* 33:74–80.
- Gruell, G.E., J.K. Brown, and C.L. Bushey. 1986. Prescribed fire opportunities in grasslands invaded by Douglas-fir: State-of-the-art guidelines. General Technical Report INT-198. U.S. Department of Agriculture, Forest Service, Intermountain Research Station, Ogden, UT. 19pp.
- Harju, S.M., M.R. Dzialak, R.C. Taylor, L.D. Hayden-Wing, J.B. Winstead. 2010. Thresholds and time lags in effects of energy development on Greater Sage-Grouse populations. *Journal of Wildlife Management* 74(3):437–448.

Hemstrom, M. A., M. J. Wisdom, M. M. Rowland, B. Wales, W. J. Hann, and R. A. Gravenmier. 2002. Sagebrush-steppe vegetation dynamics and potential for restoration in the Interior Columbia Basin, USA. *Conservation Biology* 16:1243–1255.

Homer, C.G., C.L. Aldridge, D.K. Meyer, M.J. Coan, and Z.H. Bowen. 2009. Multiscale sagebrush rangeland habitat modeling in southwest Wyoming: U.S. Geological Survey Open-File Report 2008–1027. 14pp.

Johnson, D.H. 1980. The comparison of usage and availability measurements for evaluating resource preference. *Ecology* 61:65–71.

Knick, S.T., and J.W. Connelly (editors). 2011. Greater Sage-Grouse: Ecology and conservation of a landscape species and its habitats. *Studies in Avian Biology*, vol. 38. University of California Press, Berkeley, CA.

Knick, S.T., and S.E. Hanser. 2011. Connecting pattern and process in greater sage-grouse populations and sagebrush landscapes. *In* Greater Sage-Grouse: Ecology and conservation of a landscape species and its habitats, edited by S.T. Knick and J.W. Connelly, 383–405. *Studies in Avian Biology*, vol. 38. University of California Press, Berkeley, CA.

Knick, S.T., S.E. Hanser, R.F. Miller, D.A. Pyke, M.J. Wisdom, S.P. Finn, E.T. Rinkes, and C.J. Henny. 2011. Ecological influence and pathways of land use in sagebrush. *In* Greater Sage-Grouse: Ecology and conservation of a landscape species and its habitats, edited by S.T. Knick and J.W. Connelly, 203–251. *Studies in Avian Biology*, vol. 38. University of California Press, Berkeley, CA.

LANDFIRE: LANDFIRE Existing Vegetation Type layer. (2013, June – last update.) U.S. Department of the Interior, U.S. Geological Survey. [Online.] Available at: <http://landfire.cr.usgs.gov/viewer/> [2013, May 8].

Leu, M., and S.E. Hanser. 2011. Influences of the human footprint on sagebrush landscape patterns: implications for sage-grouse conservation. *In* Greater Sage-Grouse: Ecology and conservation of a landscape species and its habitats, edited by S.T. Knick and J.W. Connelly, 253–271. *Studies in Avian Biology*, vol. 38. University of California Press, Berkeley, CA.

MacKinnon, W.C., J.W. Karl, G.R. Toevs, J.J. Taylor, M. Karl, C.S. Spurrier, and J.E. Herrick. 2011. BLM core terrestrial indicators and methods. Tech Note 440. U.S. Department of the Interior, Bureau of Land Management, National Operations Center, Denver, CO.

Manier, D.J., D.J.A Wood, Z.H. Bowen, R.M. Donovan, M.J. Holloran, L.M. Juliusson, K.S. Mayne, S.J. Oyler-McCance, F.R. Quamen, D.J. Saher, and A.J. Titolo. 2013. Summary of science, activities, programs, and policies that influence the rangewide conservation of Greater Sage-Grouse (*Centrocercus urophasianus*): U.S. Geological Survey Open-File Report 2013–1098. 170pp.

NatureServe. 2011. International ecological classification standard: Terrestrial ecological classifications. NatureServe Central Databases, Arlington, VA. Data current as of July 31, 2011.

Ong, S., C. Campbell, P. Denholm, R. Margolis, and G. Heath. 2013. Land-use requirements for solar power plants in the United States. National Renewable Energy Laboratory, U.S. Department of Energy Technical Report NREL/TP-6A20-56290. 39pp. Available at <http://www.nrel.gov/docs/fy13osti/56290.pdf>.

Pellant, M., P. Shaver, D.A. Pyke, and J.E. Herrick. 2005. Interpreting indicators of rangeland health, version 4. Technical Reference 1734-6. U.S. Department of the Interior, Bureau of Land Management, National Science and Technology Center, Denver, CO. BLM/WO/ST-00/001+1734/REV05. 122pp.

Perry, J. Personal communication. February 12, 2014.

Pyke, D.A. 2011. Restoring and rehabilitating sagebrush habitats. *In* Greater Sage-Grouse: Ecology and conservation of a landscape species and its habitats, edited by S.T. Knick and J.W. Connelly, 531–548. Studies in Avian Biology, vol. 38. University of California Press, Berkeley, CA.

Schroeder, M.A., C.L. Aldridge, A.D. Apa, J.R. Bohne, C.E. Braun, S.D. Bunnell, J.W. Connelly, P.A. Deibert, S.C. Gardner, M.A. Hilliard, G.D. Kobriger, S.M. McAdam, C.W. McCarthy, J.J. McCarthy, D.L. Mitchell, E.V. Rickerson, and S.J. Stiver. 2004. Distribution of sage-grouse in North America. *Condor* 106: 363–376.

Stiver, S.J., A.D. Apa, J.R. Bohne, S.D. Bunnell, P.A. Deibert, S.C. Gardner, M.A. Hilliard, C.W. McCarthy, and M.A. Schroeder. 2006. Greater Sage-Grouse comprehensive conservation strategy. Unpublished report. Western Association of Fish and Wildlife Agencies, Cheyenne, WY. Available at <http://www.wafwa.org/documents/pdf/GreaterSage-grouseConservationStrategy2006.pdf>.

Stiver, S.J., E.T. Rinkes, D.E. Naugle, P.D. Makela, D.A. Nance, and J.W. Karl. *In press*. Sage-grouse habitat assessment framework: Multiscale habitat assessment tool. Bureau of Land Management and Western Association of Fish and Wildlife Agencies. Technical Reference. U.S. Department of the Interior, Bureau of Land Management, Denver, CO.

Taylor, J., E. Kachergis, G. Toevs, J. Karl, M. Bobo, M. Karl, S. Miller, and C. Spurrier. 2014. AIM-monitoring: A component of the BLM assessment, inventory, and monitoring strategy. Tech Note 445. U.S. Department of the Interior, Bureau of Land Management, National Operations Center, Denver, CO.

Toevs, G.R., J.J. Taylor, C.S. Spurrier, W.C. MacKinnon, M.R. Bobo. 2011. Bureau of Land Management assessment, inventory, and monitoring strategy: For integrated renewable resources management. U.S. Department of the Interior, Bureau of Land Management, National Operations Center, Denver, CO.

U.S. Department of Agriculture. National Agricultural Statistics Service Cropland Data Layer. {YEAR}. Published crop-specific data layer [online]. USDA-NASS, Washington, D.C. Available at <http://nassgeodata.gmu.edu/CropScape/>(accessed {DATE}; verified {DATE}).

United States Department of the Interior, Bureau of Land Management. 2001. Handbook H-4180-1, Release 4-107. Rangeland health standards handbook. Available at [http://www.blm.gov/style/medialib/blm/wo/Information\\_Resources\\_Management/policy/blm\\_handbook.Par.61484.File.dat/h4180-1.pdf](http://www.blm.gov/style/medialib/blm/wo/Information_Resources_Management/policy/blm_handbook.Par.61484.File.dat/h4180-1.pdf).

U.S. Department of the Interior, Bureau of Land Management. 2005. Wind Energy Development Programmatic Environmental Impact Statement (EIS). BLM Washington Office, Washington, D.C.

U.S. Department of the Interior, Bureau of Land Management. 2011. BLM national Greater Sage-Grouse land use planning strategy. Instruction Memorandum No. 2012-044. BLM Washington Office, Washington, D.C.

U.S. Department of the Interior, Fish and Wildlife Service. 2010. Endangered and threatened wildlife and plants; 12-month findings for petitions to list the Greater Sage-Grouse (*Centrocercus urophasianus*) as threatened or endangered. Proposed Rule. Federal Register 75: 13910–14014 (March 23, 2010).

U.S. Department of the Interior, Fish and Wildlife Service. 2013. Greater Sage-grouse (*Centrocercus urophasianus*) conservation objectives: Final report. U.S. Fish and Wildlife Service, Denver, CO.

**Attachment A. An Overview of Monitoring Commitments**

	Broad and Mid Scales					Fine and Site Scales
	Implement- tation	Sagebrush Availability	Habitat Degradation	Population	Effectiveness	
<b><i>How will the data be used?</i></b>	Track and document implementation of land use plan decisions and inform adaptive management	Track changes in land cover (sagebrush) and inform adaptive management	Track changes in disturbance (threats) to sage-grouse habitat and inform adaptive management	Track trends in sage-grouse populations (and/or leks; as determined by state wildlife agencies) and inform adaptive management	Characterize the relationship among disturbance, implementation actions, and sagebrush metrics and inform adaptive management	Measure seasonal habitat, connectivity at the fine scale, and habitat conditions at the site scale, calculate disturbance, and inform adaptive management
<b><i>Who is collecting the data?</i></b>	BLM FO and USFS Forest	NOC and NIFC	National datasets (NOC), BLM FOs, and USFS Forests as applicable	State wildlife agencies through WAFWA	Comes from other broad- and mid-scale monitoring types, analyzed by the NOC	BLM FO and SO, USFS Forests and RO (with partners)
<b><i>How often are the data collected, reported, and made available to USFWS?</i></b>	Collected and reported annually; summary report every 5 years	Updated and changes reported annually; summary report every 5 years	Collected and changes reported annually; summary report every 5 years	State data reported annually per WAFWA MOU; summary report every 5 years	Collected and reported every 5 years (coincident with LUP evaluations)	Collection and trend analysis ongoing, reported every 5 years or as needed to inform adaptive management
<b><i>What is the spatial scale?</i></b>	Summarized by LUP with flexibility for reporting by other units	Summarized by PACs (size dependent) with flexibility for reporting by other units	Summarized by PACs (size dependent) with flexibility for reporting by other units	Summarized by PACs (size dependent) with flexibility for reporting by other units	Summarized by MZ and LUP with flexibility for reporting by other units (e.g., PAC)	Variable (e.g., projects and seasonal habitats)
<b><i>What are the potential personnel and budget impacts?</i></b>	Additional capacity or re-prioritization of ongoing monitoring work and budget realignment	At a minimum, current skills and capacity must be maintained; data management costs are TBD	At a minimum, current skills and capacity must be maintained; data layer purchase cost are TBD	No additional personnel or budget impacts for the BLM or the USFS	Additional capacity or re-prioritization of ongoing monitoring work and budget realignment	Additional capacity or re-prioritization of ongoing monitoring work and budget realignment

<b>Who has primary and secondary responsibilities for reporting?</b>	1) BLM FO & SO; USFS Forest & RO 2) BLM & USFS Planning	1) NOC 2) WO	1) NOC 2) BLM SO, USFS RO, & appropriate programs	1) WAFWA & state wildlife agencies 2) BLM SO, USFS RO, NOC	1) Broad and mid scale at the NOC, LUP at BLM SO, USFS RO	1) BLM FO & USFS Forests 2) BLM SO & USFS RO
<b>What new processes/tools are needed?</b>	National implementation datasets and analysis tools	Updates to national land cover data	Data standards and rollup methods for these data	Standards in population monitoring (WAFWA)	Reporting methodologies	Data standards data storage; and reporting

FO (field office); NIFC (National Interagency Fire Center); NOC (National Operations Center); RO (regional office); SO (state office); TBD (to be determined); WO (Washington Office)

**Attachment B.** User and Producer Accuracies for Aggregated Ecological Systems within LANDFIRE Map Zones

<b>LANDFIRE Map Zone Name</b>	<b>User Accuracy</b>	<b>Producer Accuracy</b>	<b>% of Map Zone within Historical Schroeder</b>
Wyoming Basin	76.9%	90.9%	98.5%
Snake River Plain	68.8%	85.2%	98.4%
Missouri River Plateau	57.7%	100.0%	91.3%
Grand Coulee Basin of the Columbia Plateau	80.0%	80.0%	89.3%
Wyoming Highlands	75.3%	85.9%	88.1%
Western Great Basin	69.3%	75.4%	72.9%
Blue Mountain Region of the Columbia Plateau	85.7%	88.7%	72.7%
Eastern Great Basin	62.7%	80.0%	62.8%
Northwestern Great Plains	76.5%	92.9%	46.3%
Northern Rocky Mountains	72.5%	89.2%	42.5%
Utah High Plateaus	81.8%	78.3%	41.5%
Colorado Plateau	65.3%	76.2%	28.8%
Middle Rocky Mountains	78.6%	73.3%	26.4%
Cascade Mountain Range	57.1%	88.9%	17.3%
Sierra Nevada Mountain Range	0.0%	0.0%	12.3%
Northwestern Rocky Mountains	66.7%	60.0%	7.3%
Southern Rocky Mountains	58.6%	56.7%	7.0%
Northern Cascades	75.0%	75.0%	2.6%
Mogollon Rim	66.7%	100.0%	1.7%
Death Valley Basin	0.0%	0.0%	1.2%

There are two anomalous map zones with 0% user and producer accuracies, attributable to no available reference data for the ecological systems of interest.

*User accuracy* is a map-based accuracy that is computed by looking at the reference data for a class and determining the percentage of correct predictions for these samples. For example, if I select any sagebrush pixel on the classified map, what is the probability that I'll be standing in a sagebrush stand when I visit that pixel location in the field? *Commission Error* equates to including a pixel in a class when it should have been excluded (i.e., commission error =  $1 - \text{user's accuracy}$ ).

*Producer accuracy* is a reference-based accuracy that is computed by looking at the predictions produced for a class and determining the percentage of correct predictions. In other words, if I know that a particular area is sagebrush (I've been out on the ground to check), what is the probability that the digital map will correctly identify that pixel as sagebrush? *Omission Error* equates to excluding a pixel that should have been included in the class (i.e., omission error =  $1 - \text{producer's accuracy}$ ).

**Attachment C. Sagebrush Species and Subspecies Included in the Selection Criteria for Building the EVT and BpS Layers**

- *Artemisia arbuscula* subspecies *longicaulis*
- *Artemisia arbuscula* subspecies *longiloba*
- *Artemisia bigelovii*
- *Artemisia nova*
- *Artemisia papposa*
- *Artemisia pygmaea*
- *Artemisia rigida*
- *Artemisia spinescens*
- *Artemisia tripartita* subspecies *rupicola*
- *Artemisia tripartita* subspecies *tripartita*
- *Tanacetum nuttallii*
- *Artemisia cana* subspecies *bolanderi*
- *Artemisia cana* subspecies *cana*
- *Artemisia cana* subspecies *viscidula*
- *Artemisia tridentata* subspecies *wyomingensis*
- *Artemisia tridentata* subspecies *tridentata*
- *Artemisia tridentata* subspecies *vaseyana*
- *Artemisia tridentata* subspecies *spiciformis*
- *Artemisia tridentata* subspecies *xericensis*
- *Artemisia tridentata* variety *pauciflora*
- *Artemisia frigida*
- *Artemisia pedatifida*